

IC2 Series

Available In A Variety Of Custom Options



IC2
7300-UF



IC2
7300-D-UF



IC2
7300-UF-INT



IC2
7300-UFST-X



IC2
7300-D-UFST-X



IC2
7300-UFST-INT-X



IC2
7300



IC2
7300-D



IC2
7300-INT

IC2 Series

Available In A Variety Of Custom Options



IC2
7300-UFST



IC2
7300-D-UFST



IC2
7300-UFST-INT



IC2
7300-WH



IC2
7300-D-WH



IC2
7300-UFST-INT-WH



IC2
7300-UFST-WH



IC2
7300-D-UFST-WH



IC2
7300-UFST-INT-WH

IC2 Series

OPTIONAL HEADREST

Optional adjustable headrest can be adjusted up, down, or angled to suit the user's preference. Also available with an integrated headrest.

4D ARMRESTS

Arms are height/width and forward/backward adjustable with lockable swivel. Polyurethane arm pad for durability.

INTEGRATED SEAT SLIDER

Dual lever. Slides back and forward for those requiring more or less leg support.

ENERSORB FOAM

Seat consists of an ultra-comfortable ENERSORB™ foam that allows for greater blood circulation, reducing pressure points and providing extreme comfort. Comes in an optional 2" thickness.

GALILEO MECHANISM

Slow-release pneumatic height adjustment with infinite tilt lock, and back tension control.

BASE AND CASTERS

5-prong, heavy-duty polished aluminum base with standard 3" carpet casters.

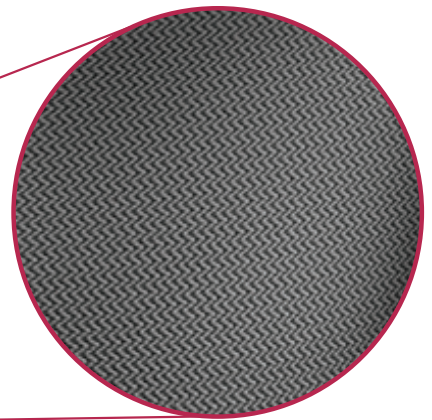


LUMBAR SUPPORT

Contoured polyurethane lumbar support pad is easily height and depth adjustable for personalized ergonomic comfort.

NEBULA MESH

Nebula™ differentiates itself by being a dual mesh that is interwoven with a 4-way stretch fabric. Using this on the back of your chair allows air to pass freely, making it comfortable in all environments. Nebula™ mesh allows for dynamic movement, so it effortlessly supports the user as they move throughout the day.



MODEL 7300-D-UFST

 **Nightingale**