



VIRGINIA CORRECTIONAL ENTERPRISES



Virginia Correctional Enterprises' Safety Barriers

Table of Contents

[Hanging Barriers](#)

Free Standing Barriers

[With Pass Thru](#)

[Without Pass Thru](#)

[TFL, Laminate, & Hardwood Bases](#)

[Wheel Base](#)

[Clamp Barriers](#)

[Cubicle Panel Mounted Clamp](#)

[Surface Mount Bracket](#)

[Free Standing Mounting Bracket](#)

[Adjustable Clamp Mounting Bracket](#)

[Custom Barrier Section](#)

[Conference Table Section](#)

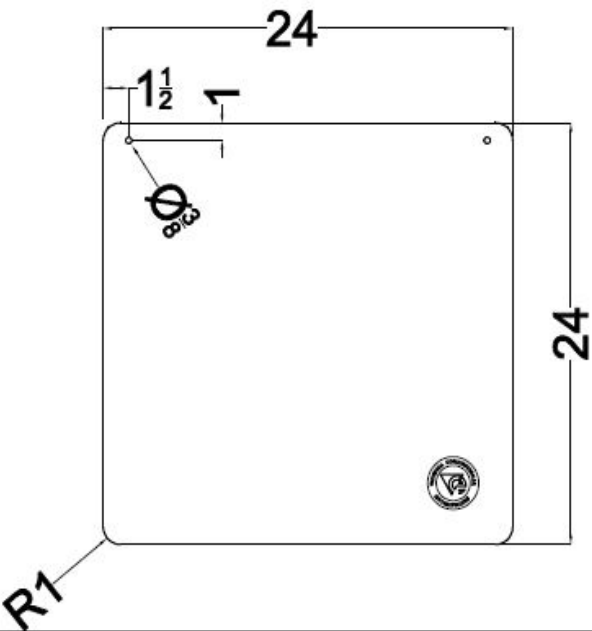
[Pricing](#)

Hanging Barriers

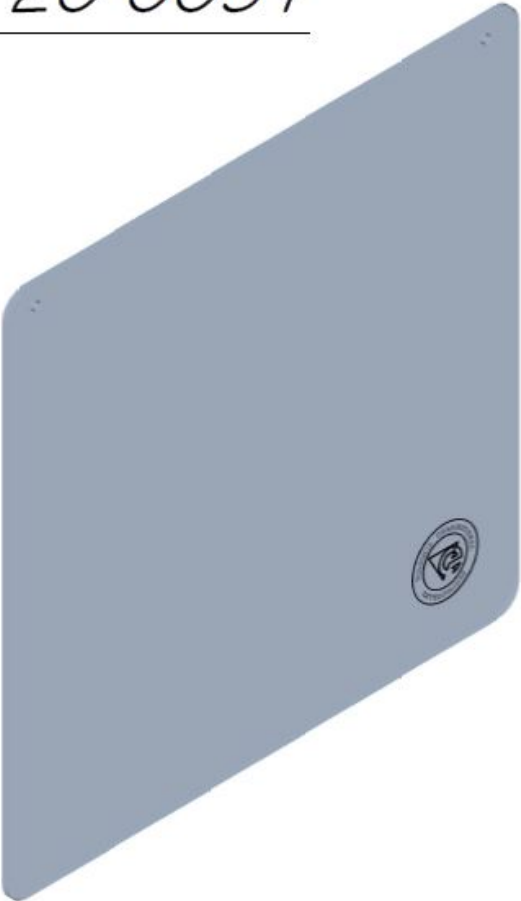


VCE's hanging barriers can be hung with light chain and S-hooks that loop through pre-drilled holes.

30SP 20 0051 24 x 24 Hanging Barrier

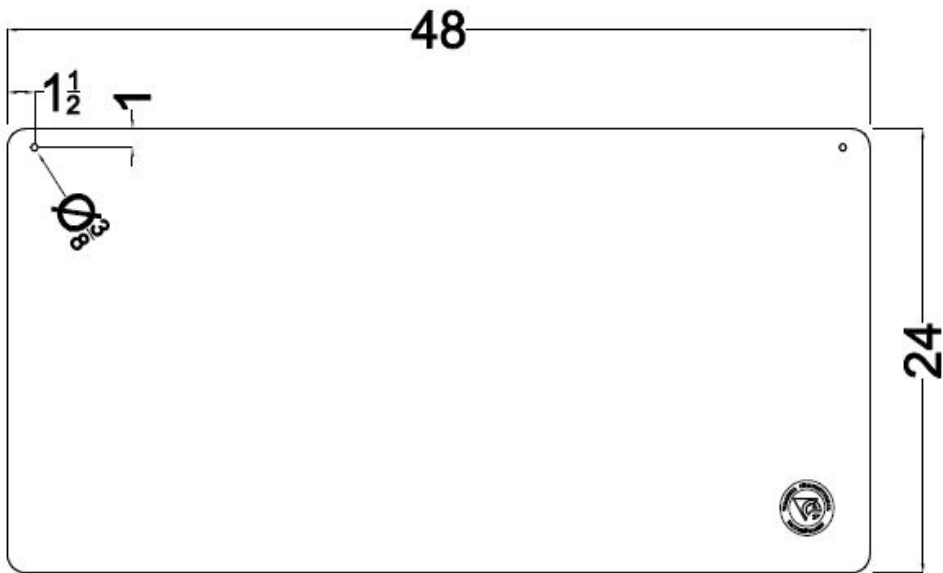


30SP 20 0051



24x24 Hanging Barrier

30SP 20 0049 48 x 24 Hanging Barrier

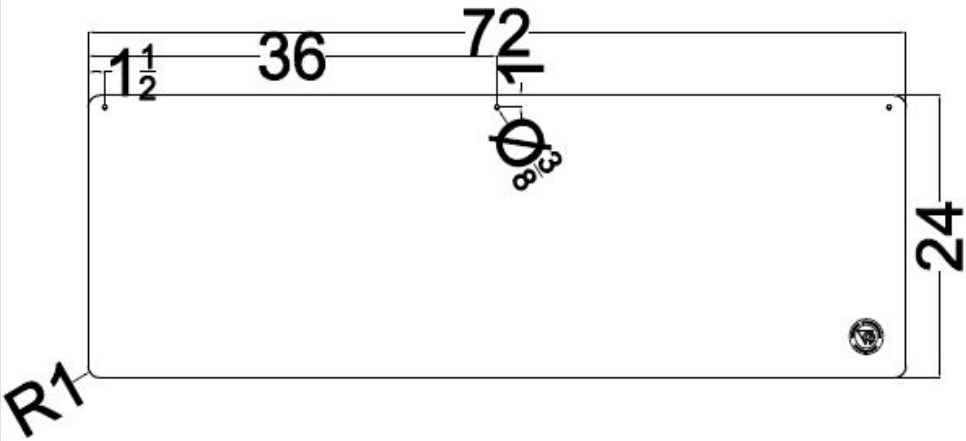


30SP 20 0049

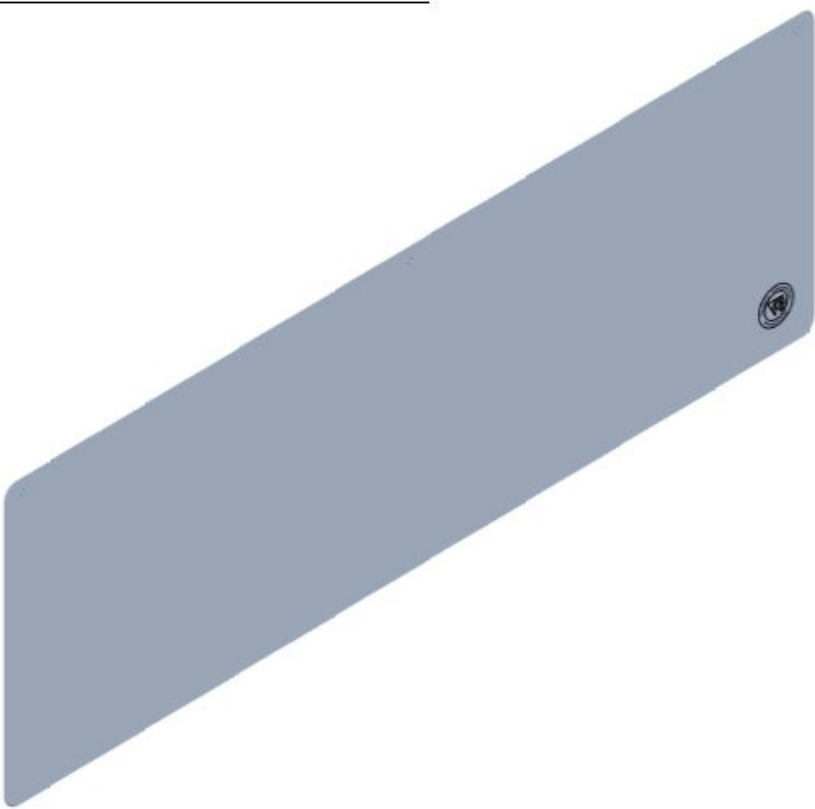


48x24 Hanging Barrier

30SP 20 0053 72 x 24 Hanging Barrier

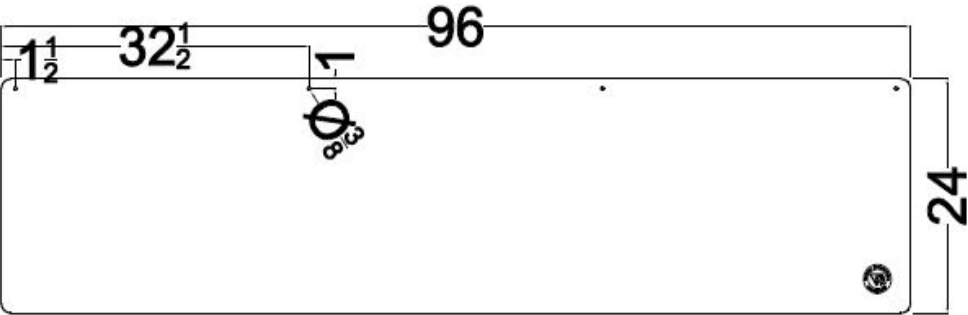


30SP 20 0053



72x24 Hanging Barrier

30SP 20 0050 96 x 24 Hanging Barrier



30SP 20 0050



96x24 Hanging Barrier

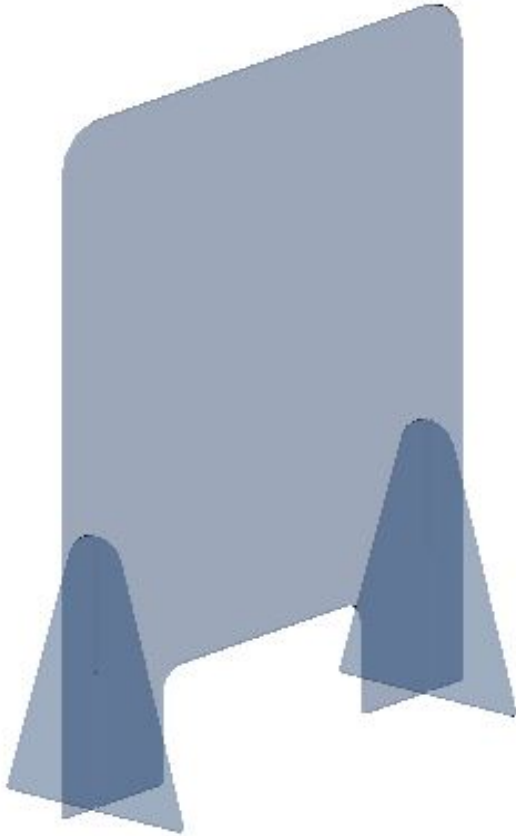
Free Standing w/ Pass Thru

These barriers come with a dual triangular base and have an opening in the center to safely pass items through with no contact.

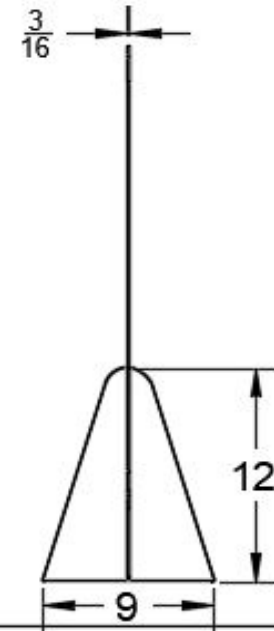


30SP 20 0068 24 x 30 Free Standing with Pass Thru

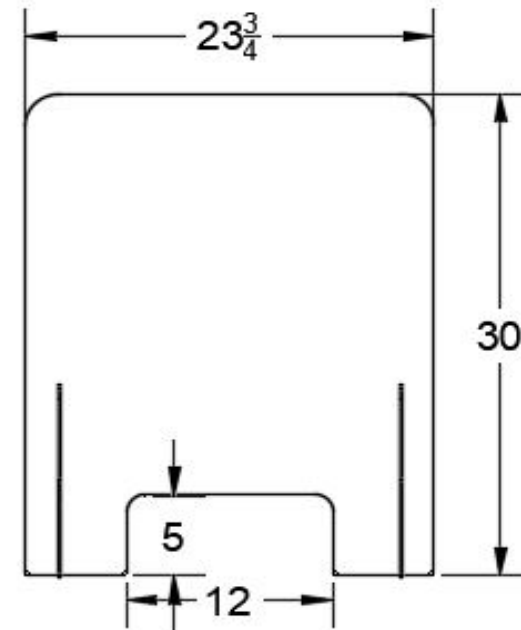
30SP 20 0068



24x30 Free Standing Safety Barrier w/ Pass Thru



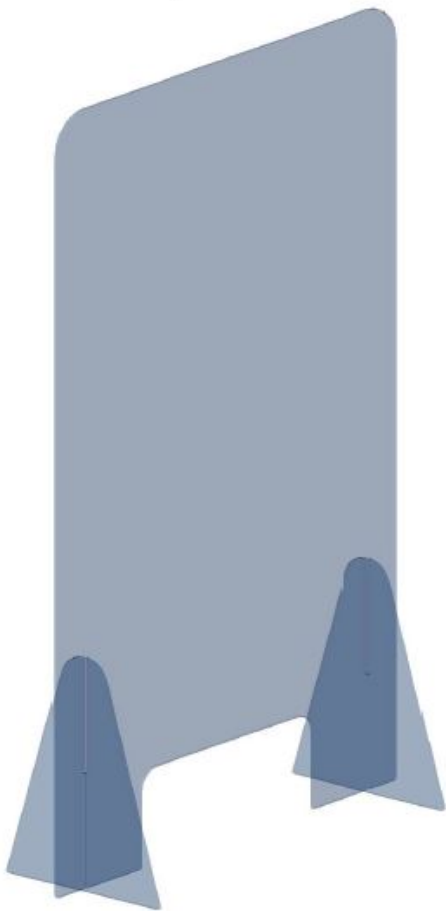
SIDE VIEW



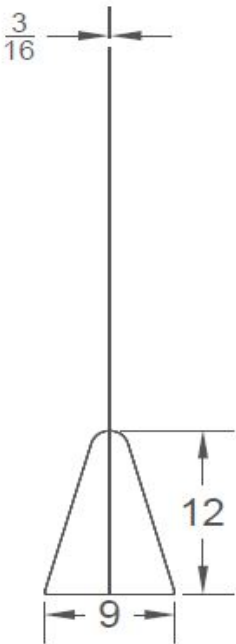
FRONT VIEW

30SP 20 0067 24 x 40 Free Standing with Pass Thru

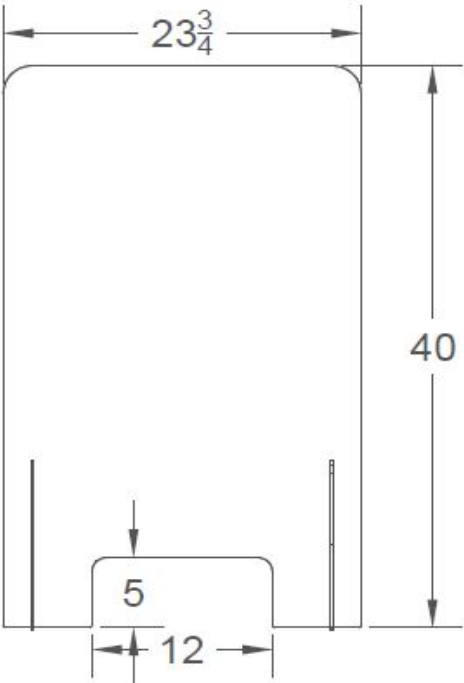
30SP 20 0067



24x40 Free Standing Barrier w/ Pass Thru



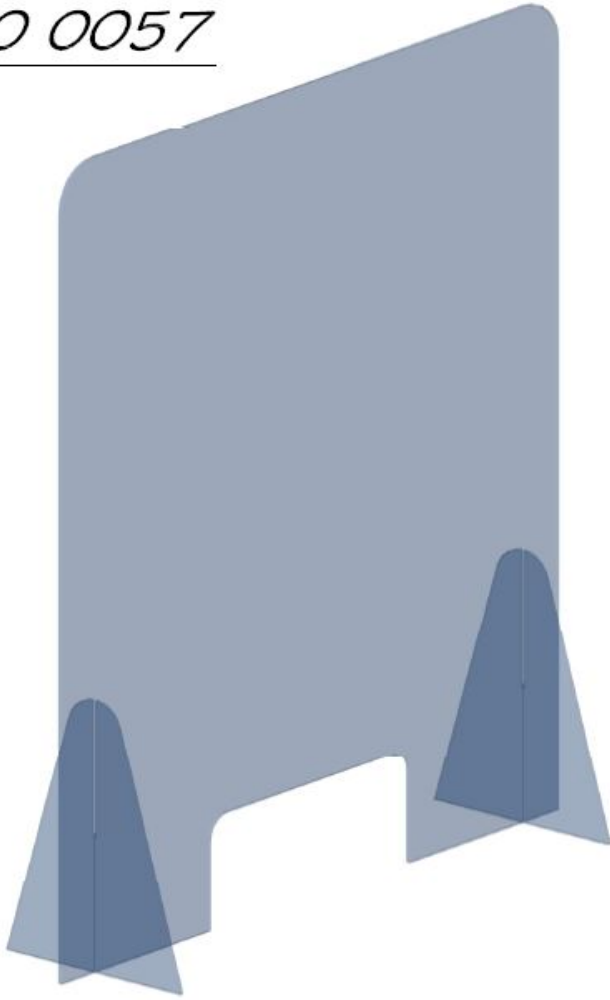
SIDE VIEW



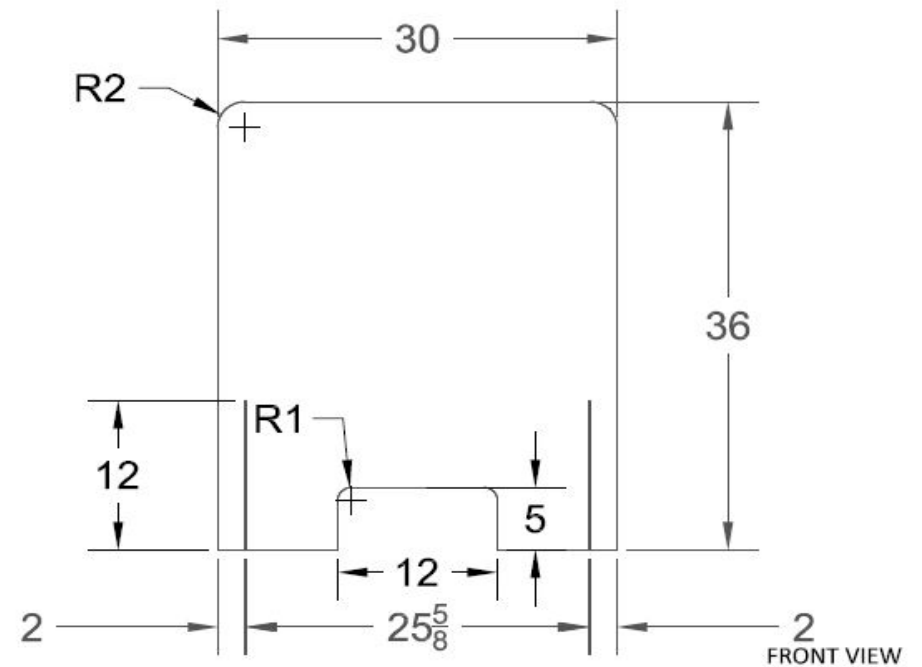
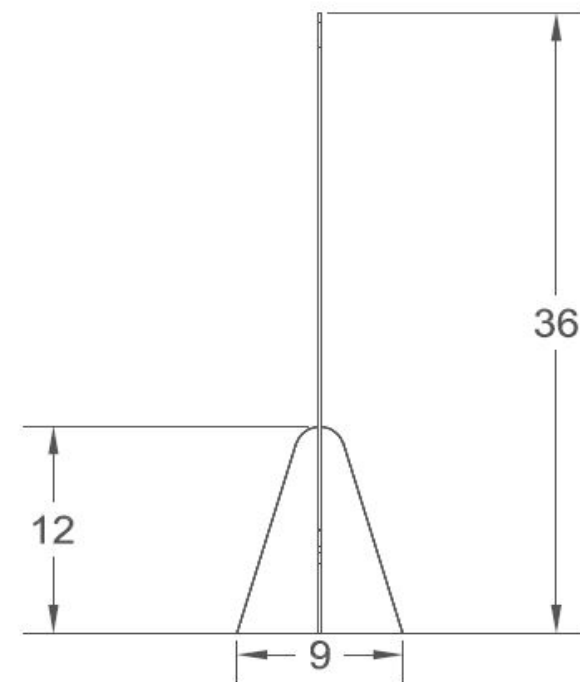
FRONT VIEW

30SP 20 0057 30 x 36 Free Standing with Pass Thru

30SP 20 0057

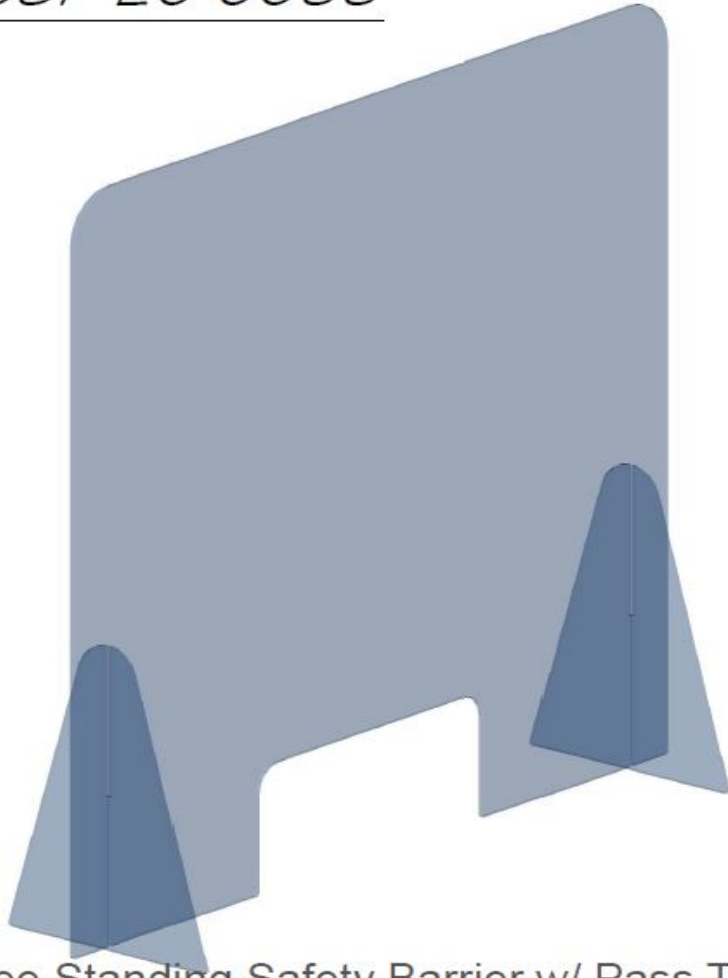


30X36 Free Standing Safety Barrier w/ Pass Thru

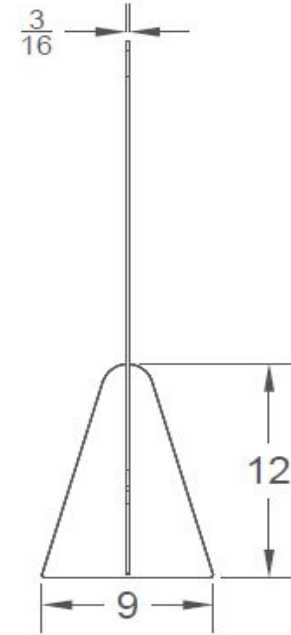


30SP 20 0066 32 x 30 Free Standing with Pass Thru

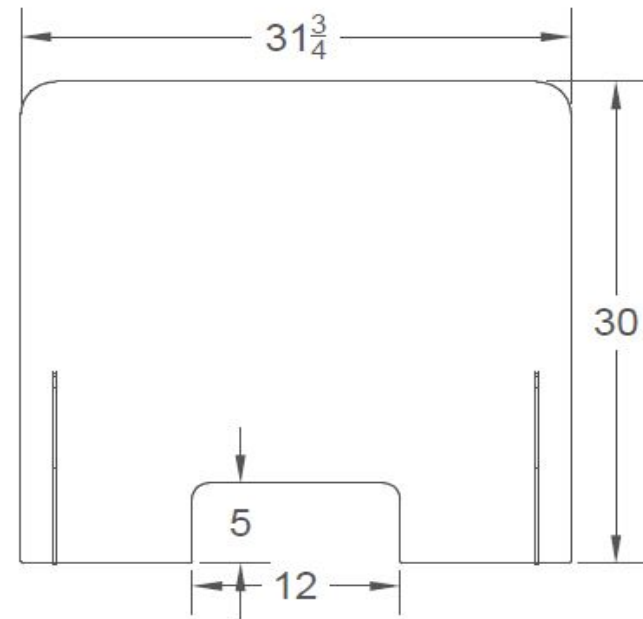
30SP 20 0066



32x30 Free Standing Safety Barrier w/ Pass Thru



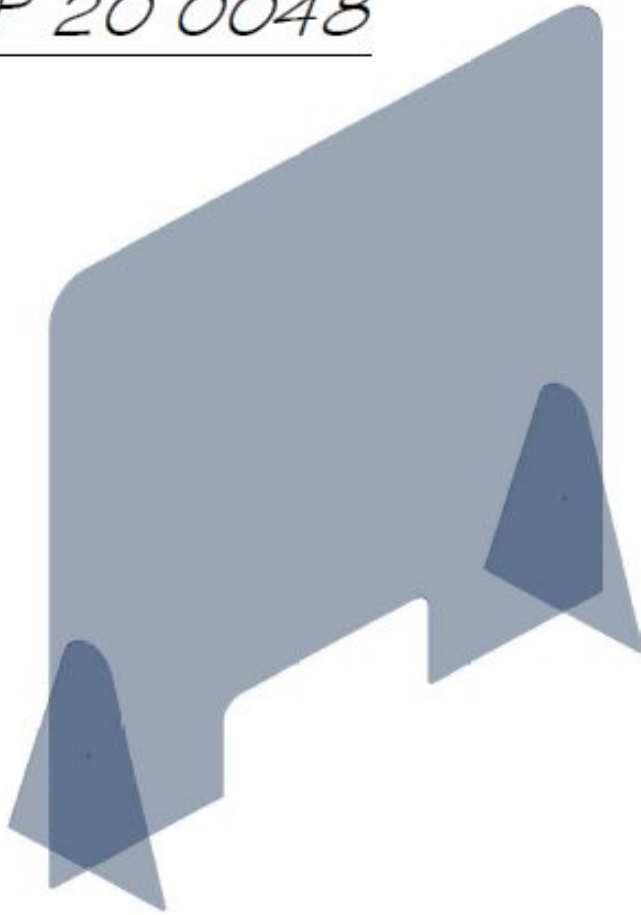
SIDE VIEW



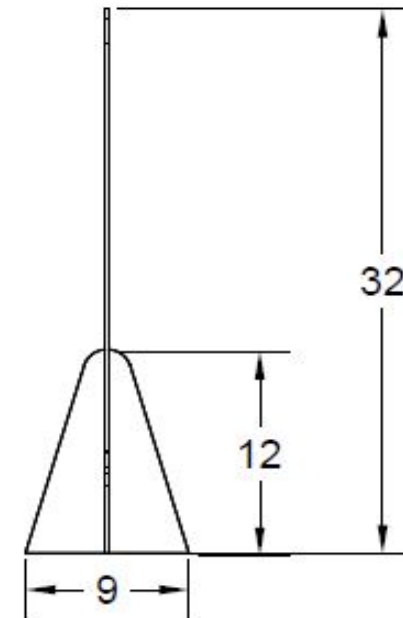
FRONT VIEW

30SP 20 0048 32 x 32 Free Standing with Pass Thru

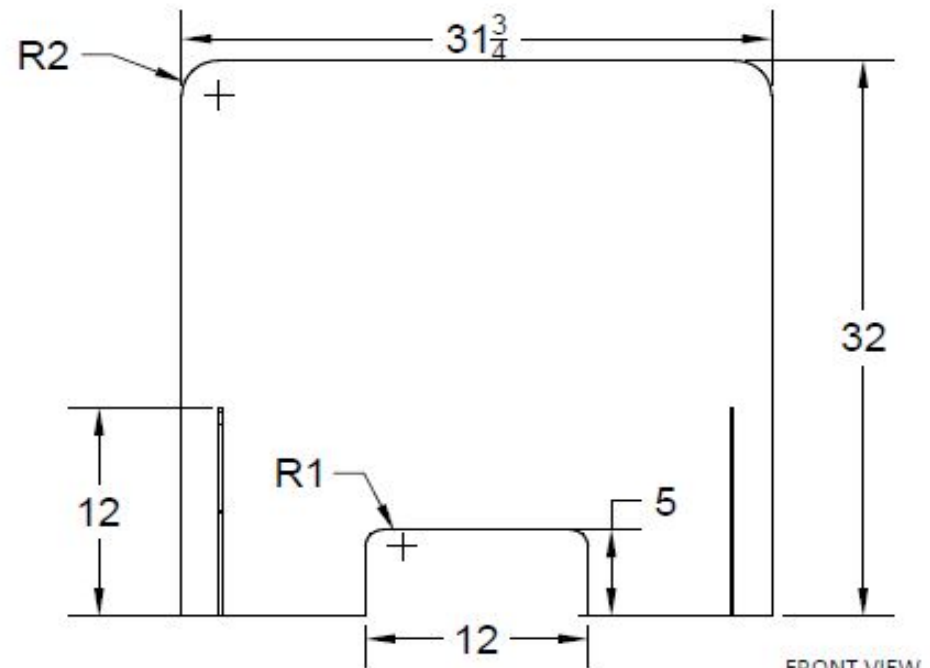
30SP 20 0048



32x32 Free Standing Safety Barrier w/ Pass Thru



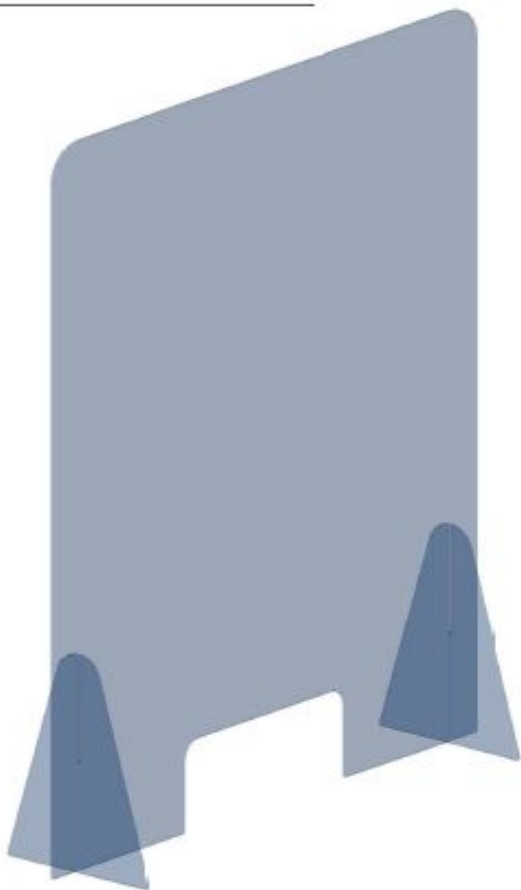
SIDE VIEW



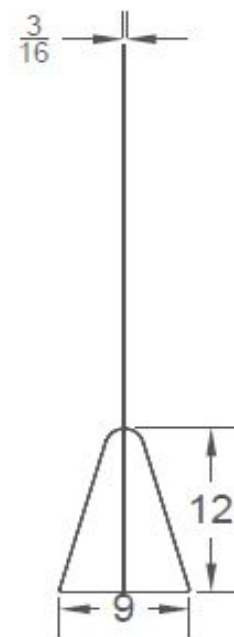
FRONT VIEW

30SP 20 0065 32 x 40 Free Standing with Pass Thru

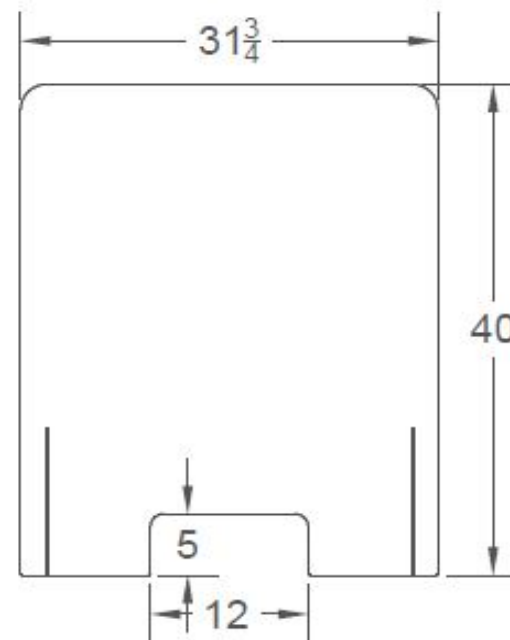
30SP 20 0065



32 x 40 Free Standing Safety Barrier w/ Pass Thru



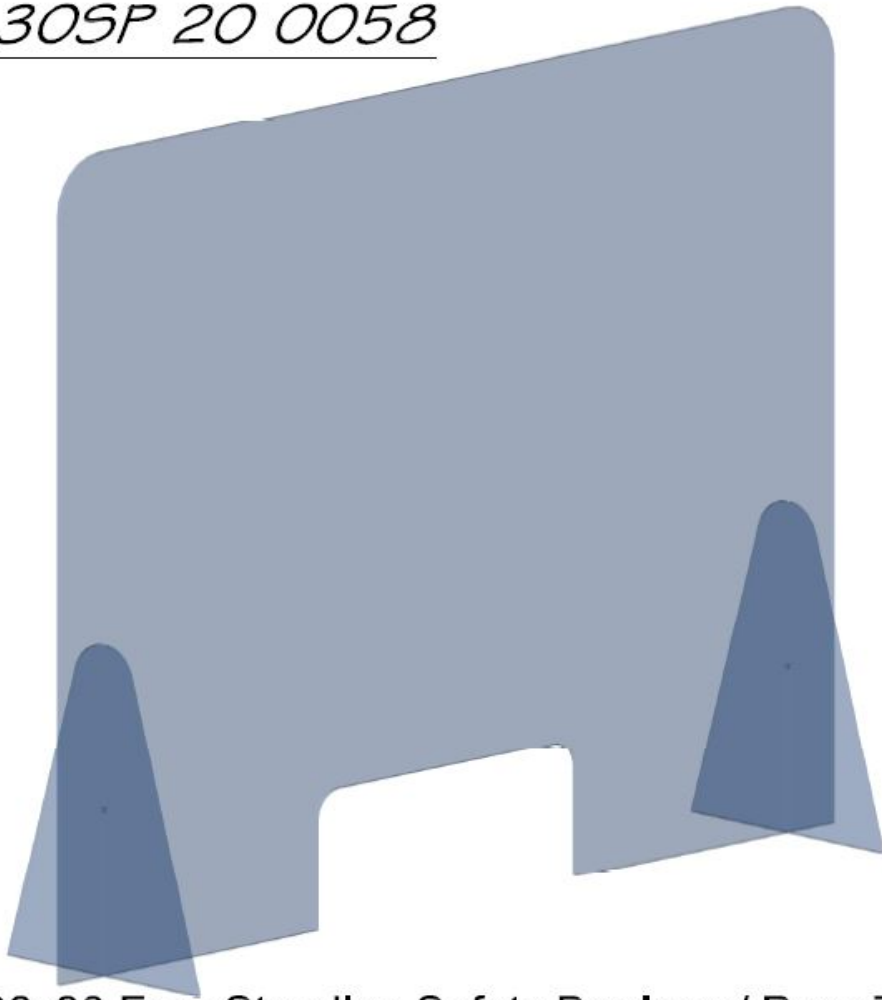
SIDE VIEW



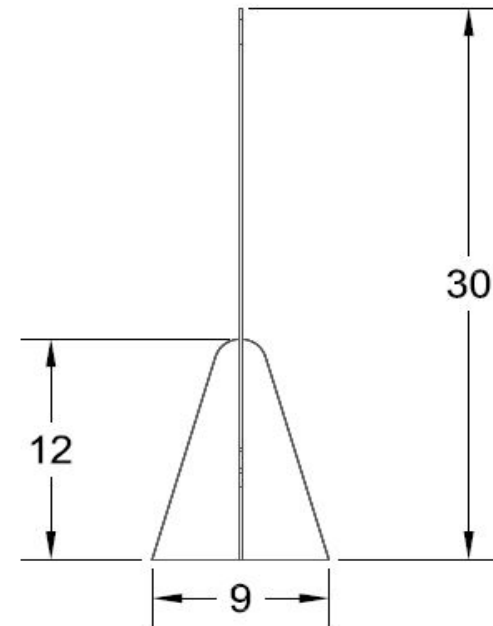
FRONT VIEW

30SP 20 0058 36 x 30 Free Standing with Pass Thru

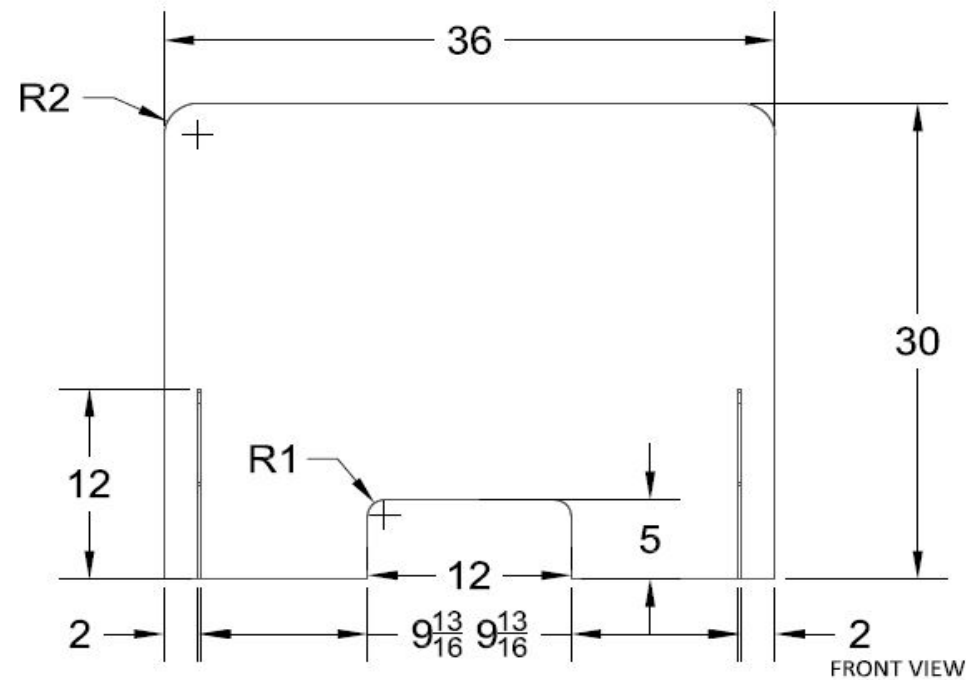
30SP 20 0058



36x30 Free Standing Safety Barrier w/ Pass Thru



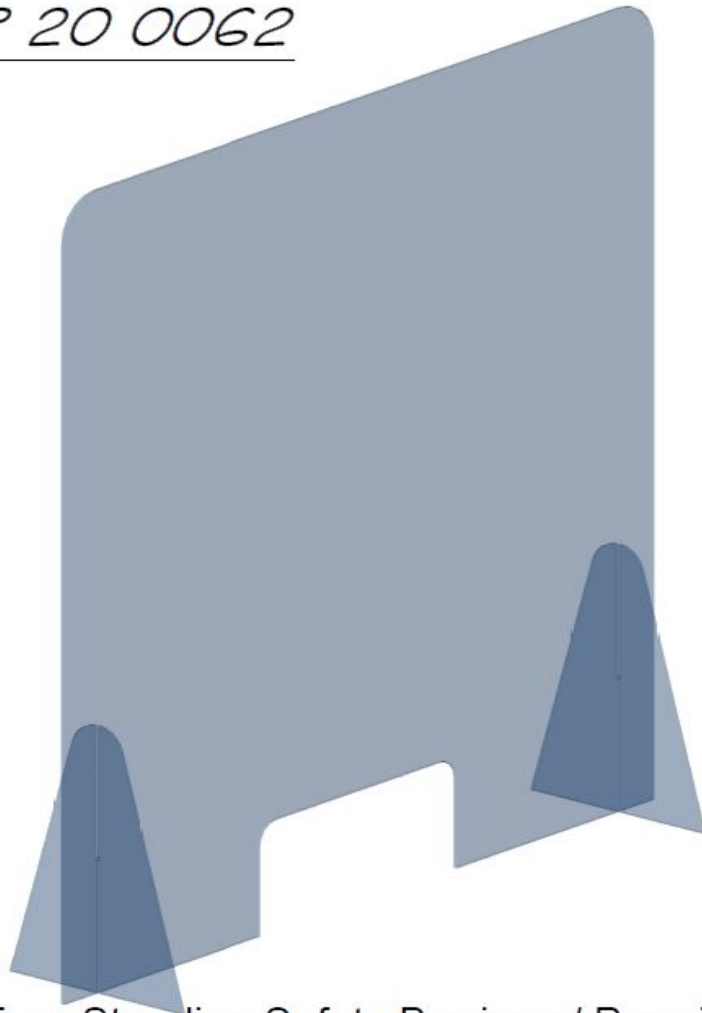
SIDE VIEW



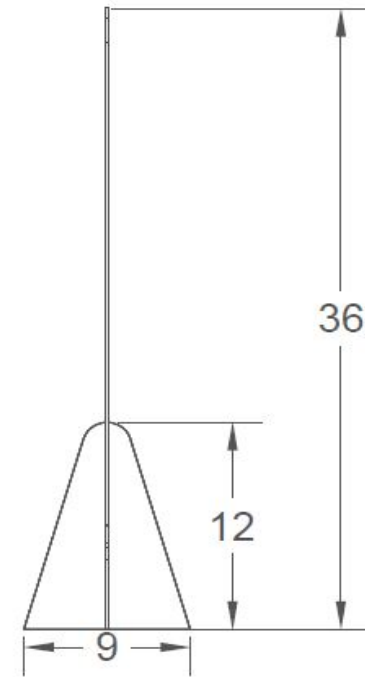
FRONT VIEW

30SP 20 0062 36 x 36 Free Standing with Pass Thru

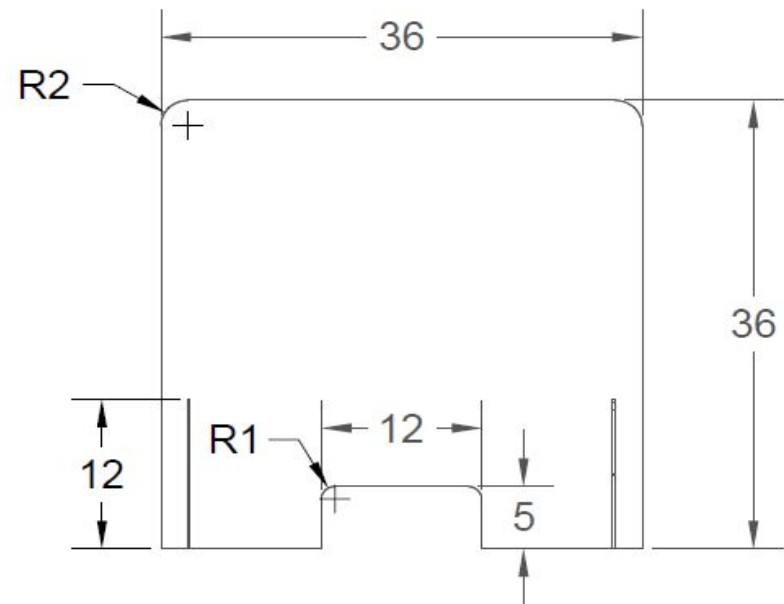
30SP 20 0062



36x36 Free Standing Safety Barrier w/ Pass Thru



SIDE VIEW



FRONT VIEW

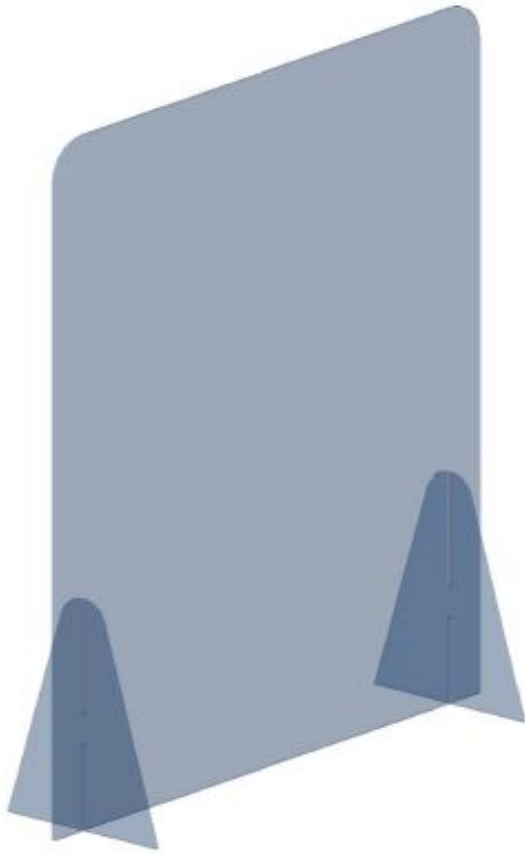
Free Standing w/o Pass Thru

These barriers come with a dual triangular base and have no opening in the center for complete protection.

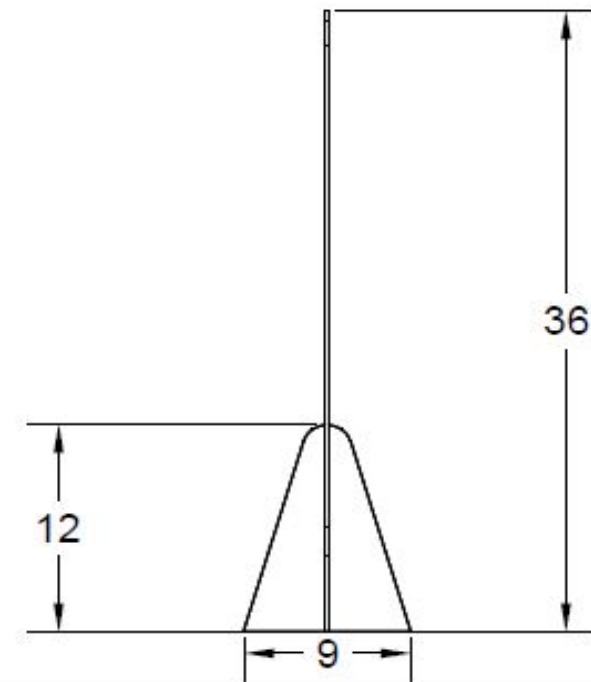


These barriers come with a dual triangular base without an opening for complete protection.

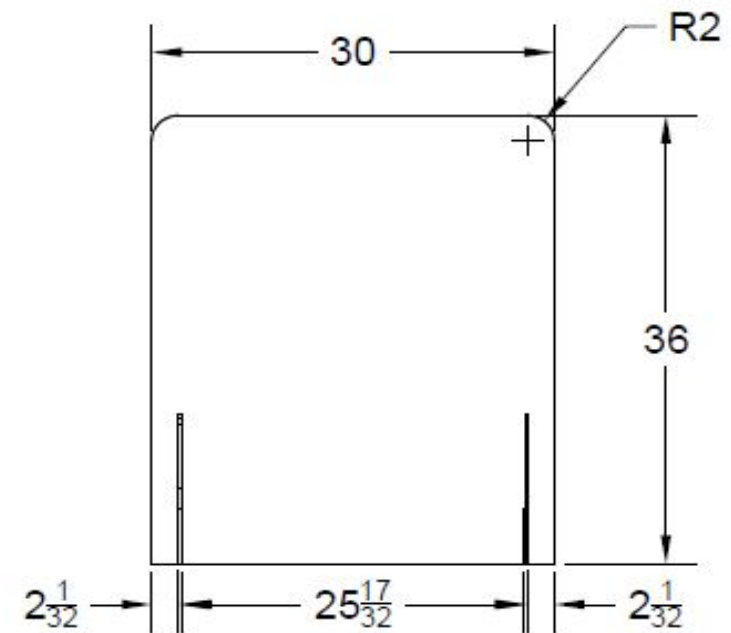
30SP 20 0047



30x36 Free Standing Safety Barrier



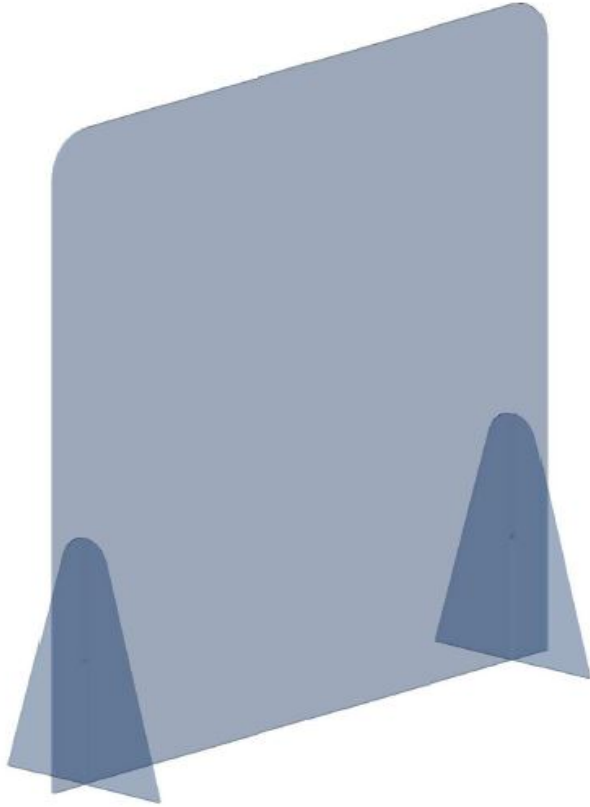
SIDE VIEW



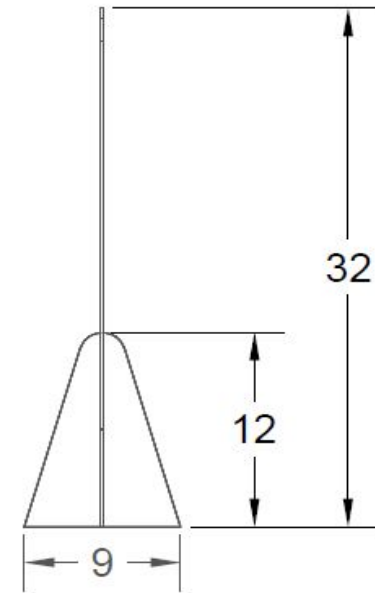
FRONT VIEW

30SP 20 0056 32 x 32 Free Standing w/o Pass Thru

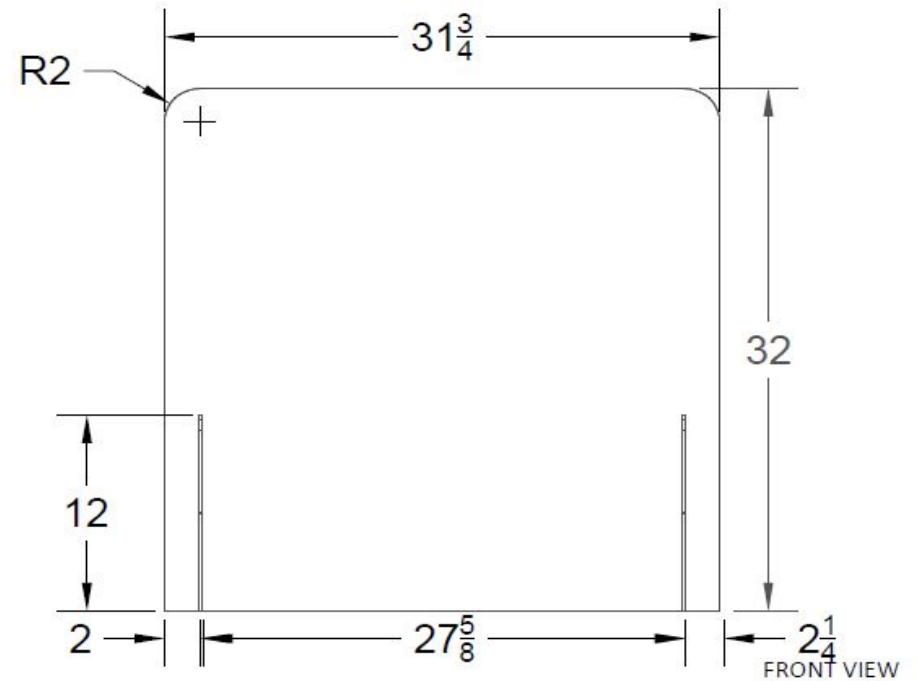
30SP 20 0056



32x32 Free Standing Safety Barrier



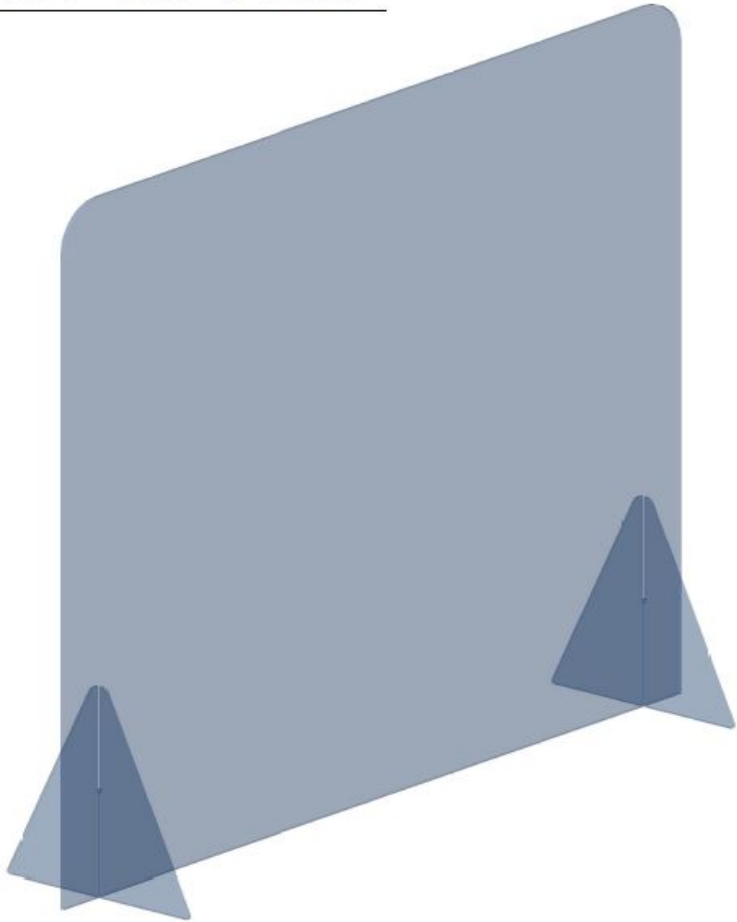
SIDE VIEW



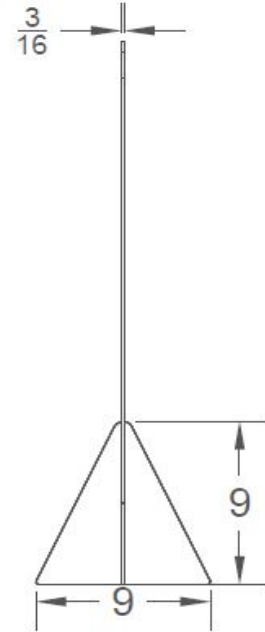
FRONT VIEW

30SP 20 0059 36 x 30 Free Standing w/o Pass Thru

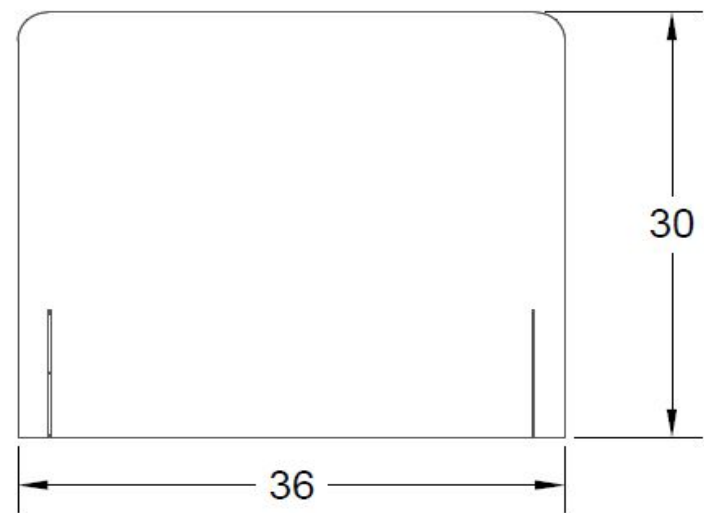
30SP 20 0059



36x30 Free Standing Safety Barrier



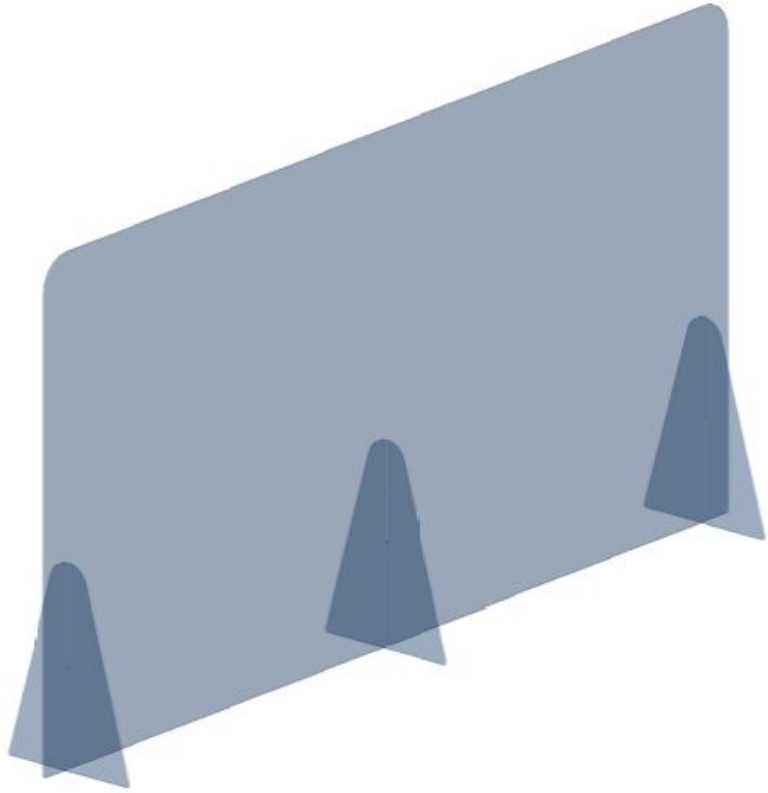
SIDE VIEW



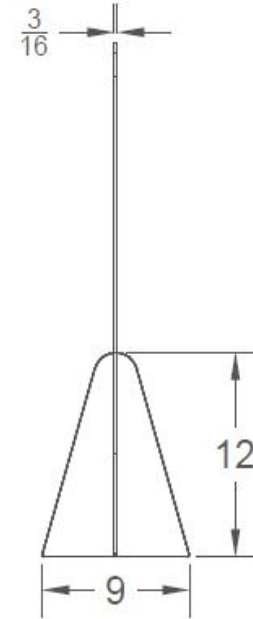
FRONT VIEW

30SP 20 0083 60 x 30 Free Standing w/o Pass Thru

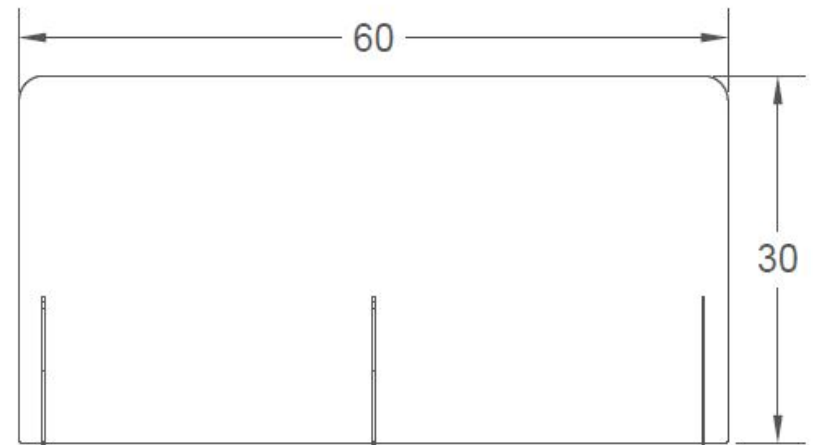
30SP 20 0083



60x30 Free Standing Safety Barrier



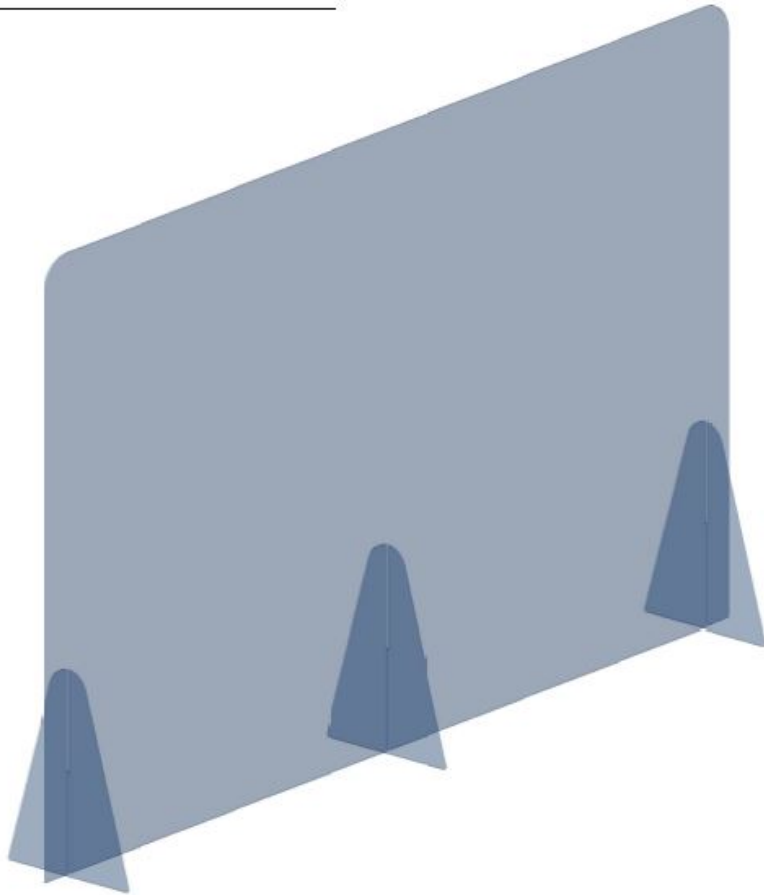
SIDE VIEW



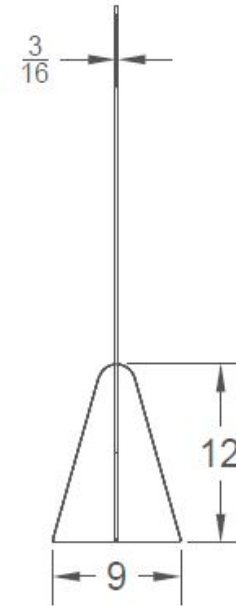
FRONT VIEW

30SP 20 0090 60 x 36 Free Standing w/o Pass Thru

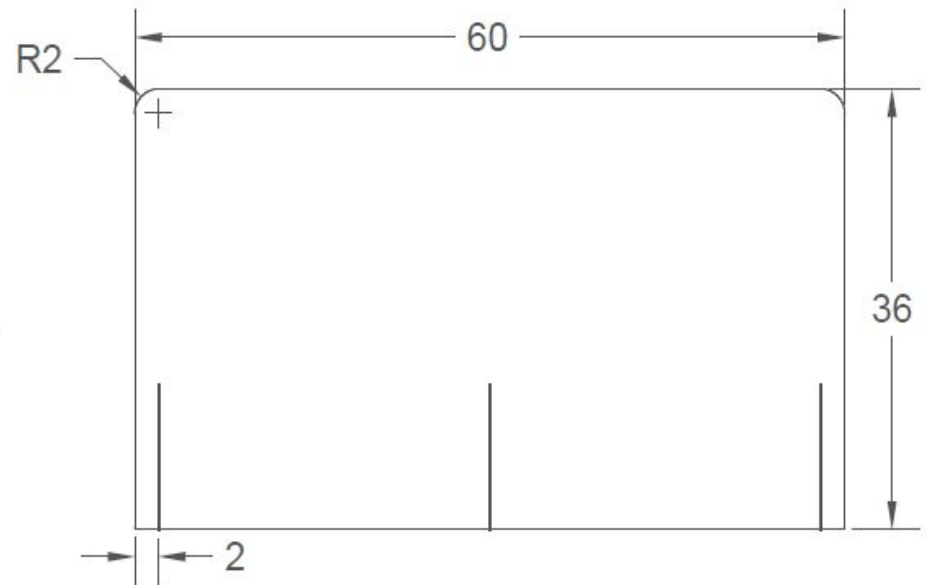
30SP 20 0090



60x36 Free Standing Safety Barrier



SIDE VIEW



FRONT VIEW

Safety Barriers w/ TFL, Laminate, & Hardwood Bases

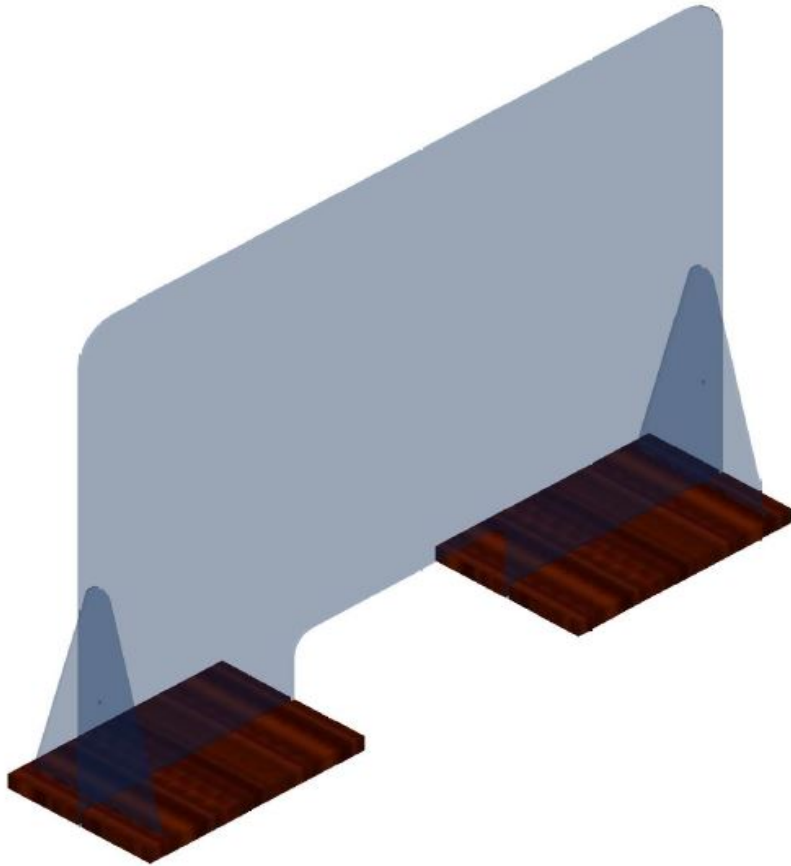


These barriers come with a TFL, Laminate, or Solid Maple Hardwood base that can match or accent most tables, desks, or counter tops.

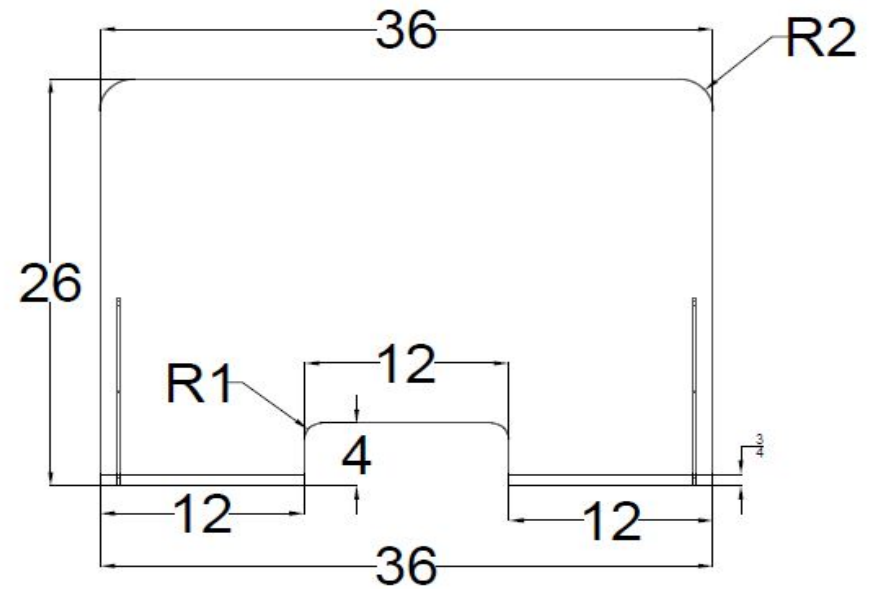
The pass-thru can be centered or offset to meet your particular application.

30SP 20 0071 36 x 24 TFL Base Safety Barrier w/ Pass Thru

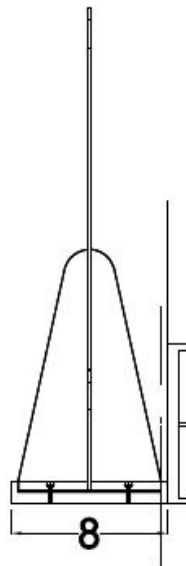
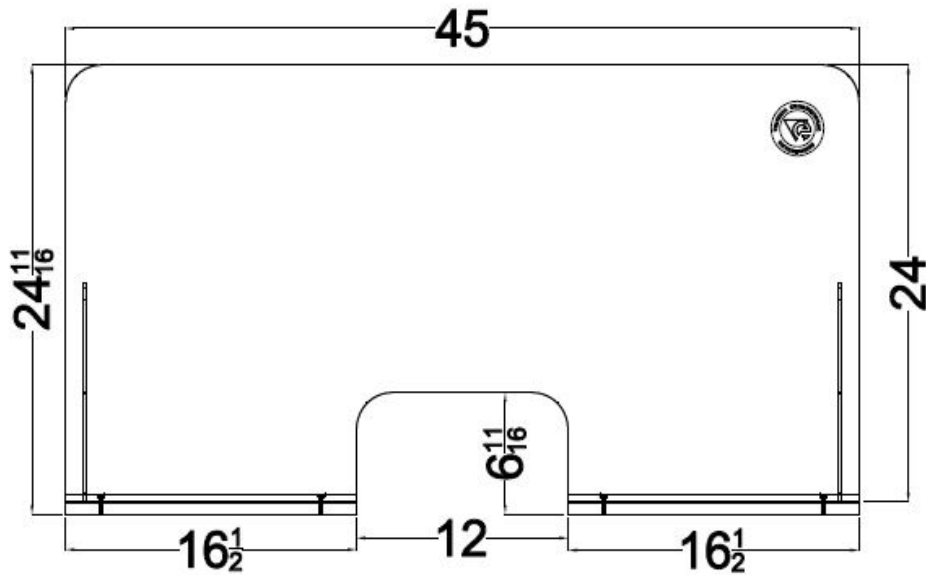
30SP 20 0071



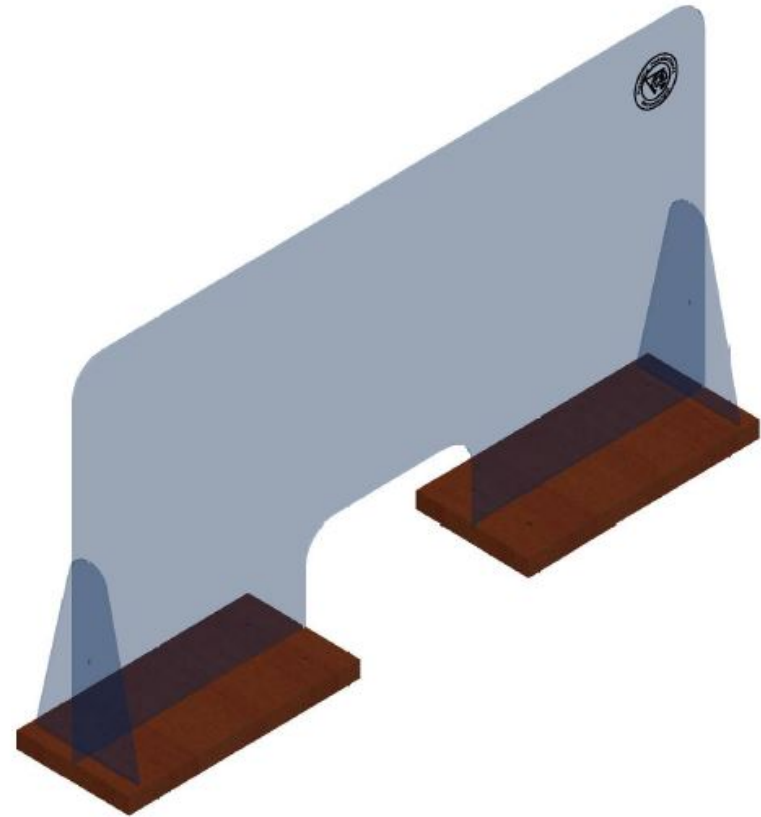
36x24 TFL Base Safety Barrier w/Pass Thru



30SP 20 0063 46 x 24 Laminate Base Safety Barrier w/ Pass Thru

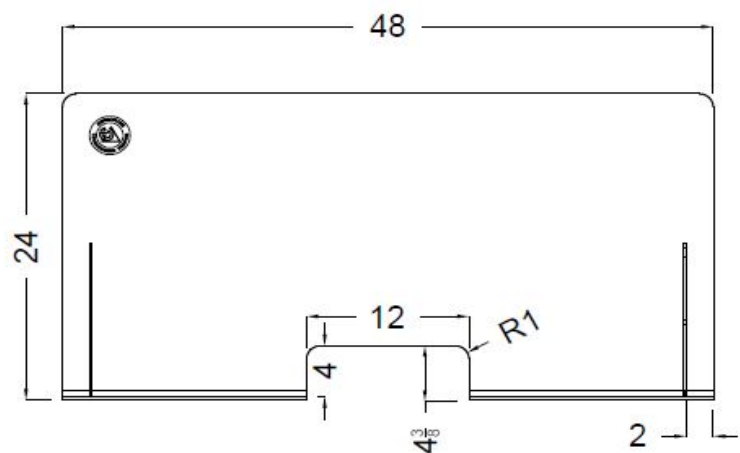


30SP 20 0063

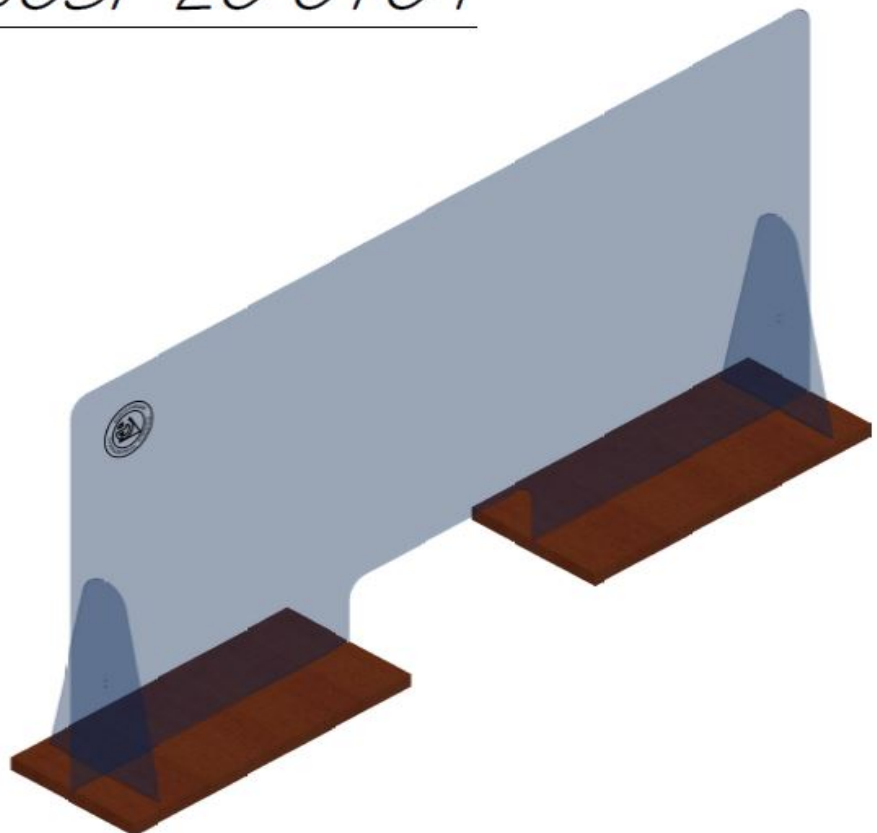


46x24 LAM Base Safety Barrier w/ Pass Thru

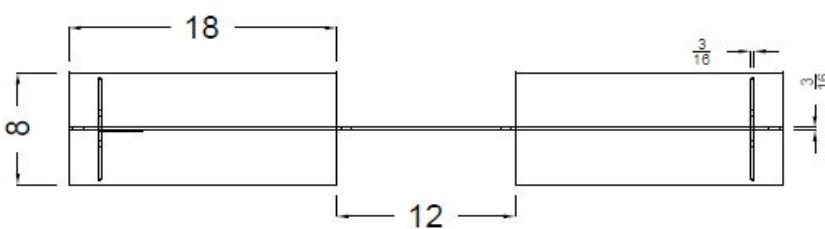
30SP 20 0104 84 x 26 TFL Base Safety Barrier w/ Pass Thru



30SP 20 0104

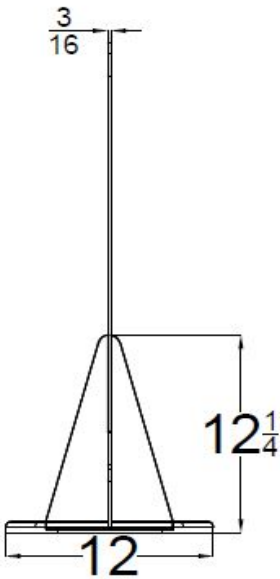
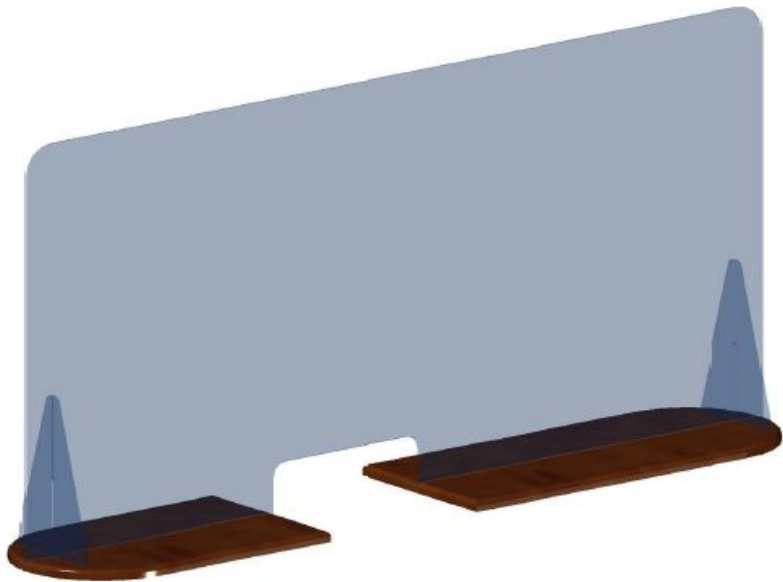


48x24 TFL Base Safety Barrier w/ Pass Thru

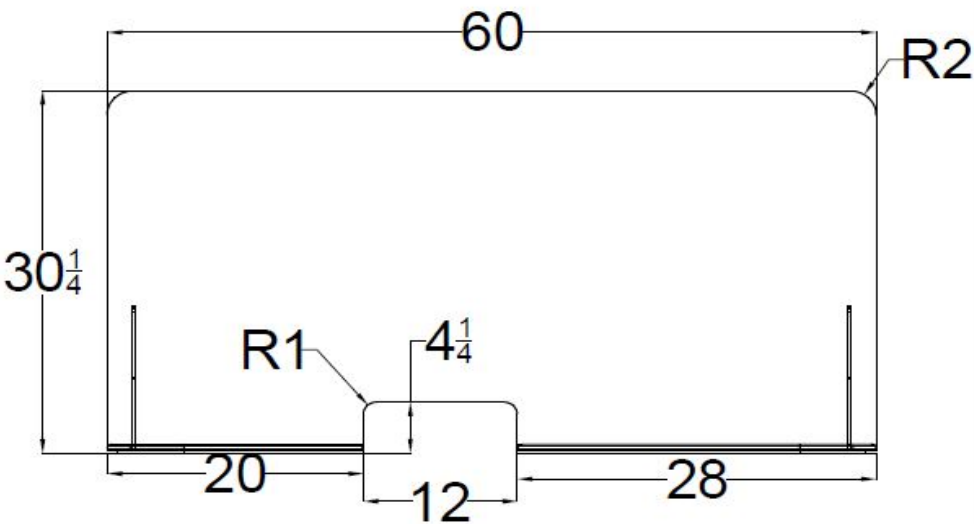


30SP 20 0072 60 x 30 Maple Base Safety Barrier w/ Pass Thru

30SP 20 0072

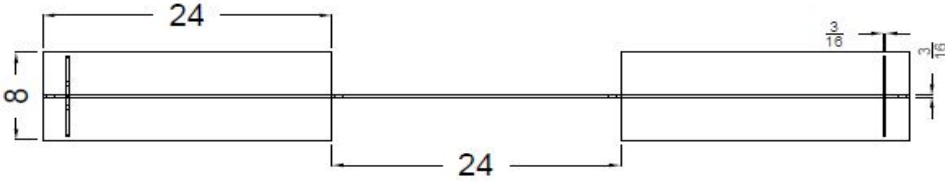
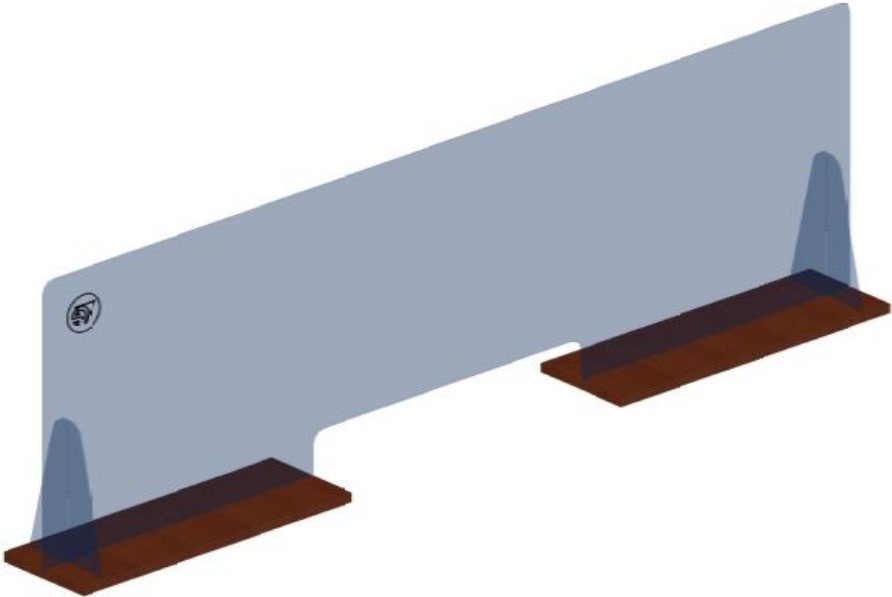
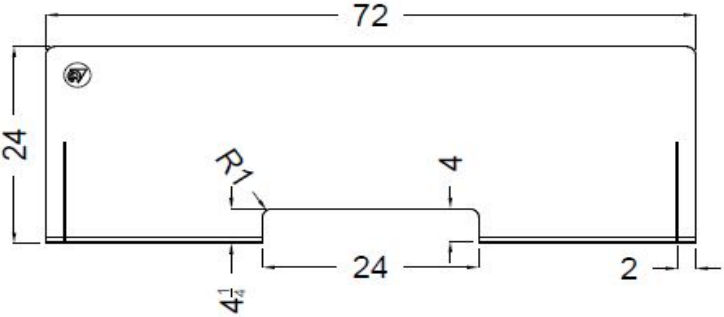


60x30 Maple Base Safety Barrier w/ Pass Thru



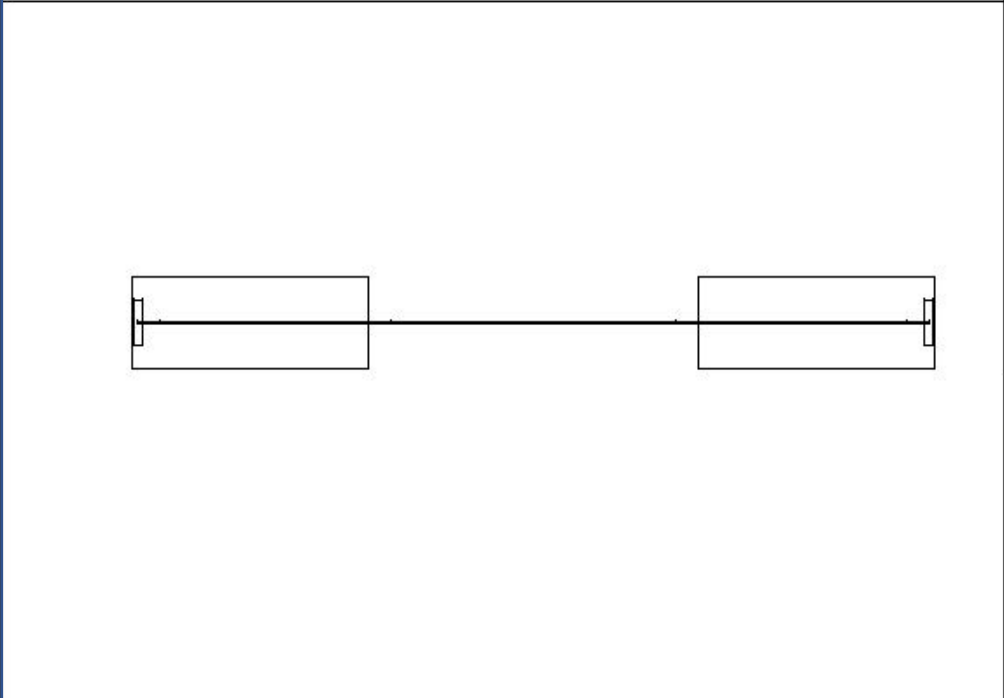
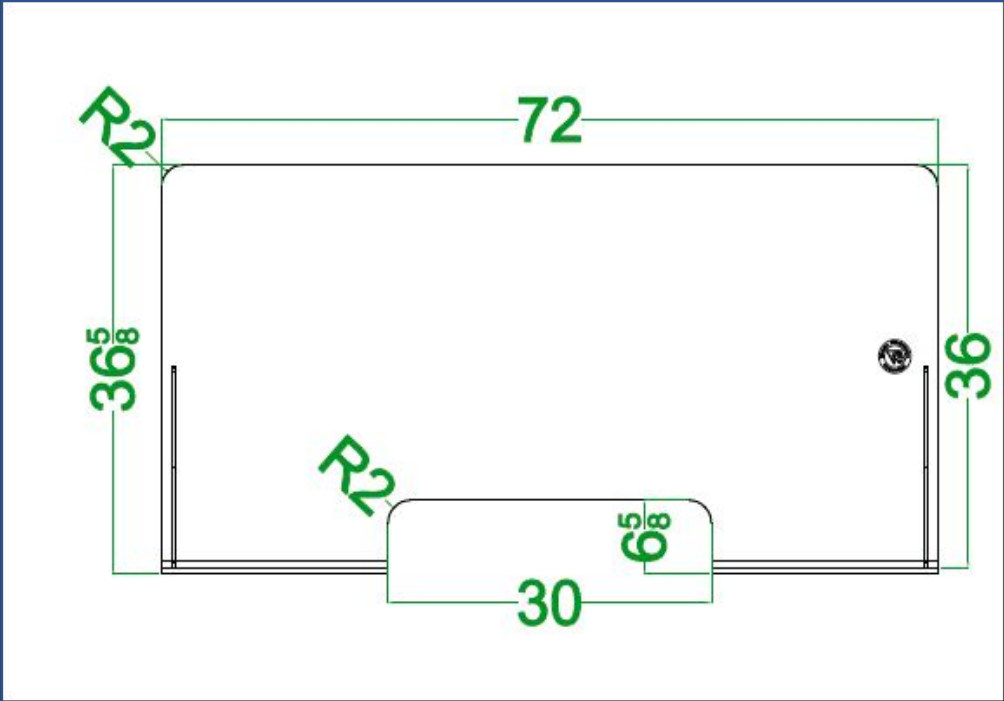
30SP 20 0105 72 x 24 TFL Base Safety Barrier w/ Pass Thru

30SP 20 0105

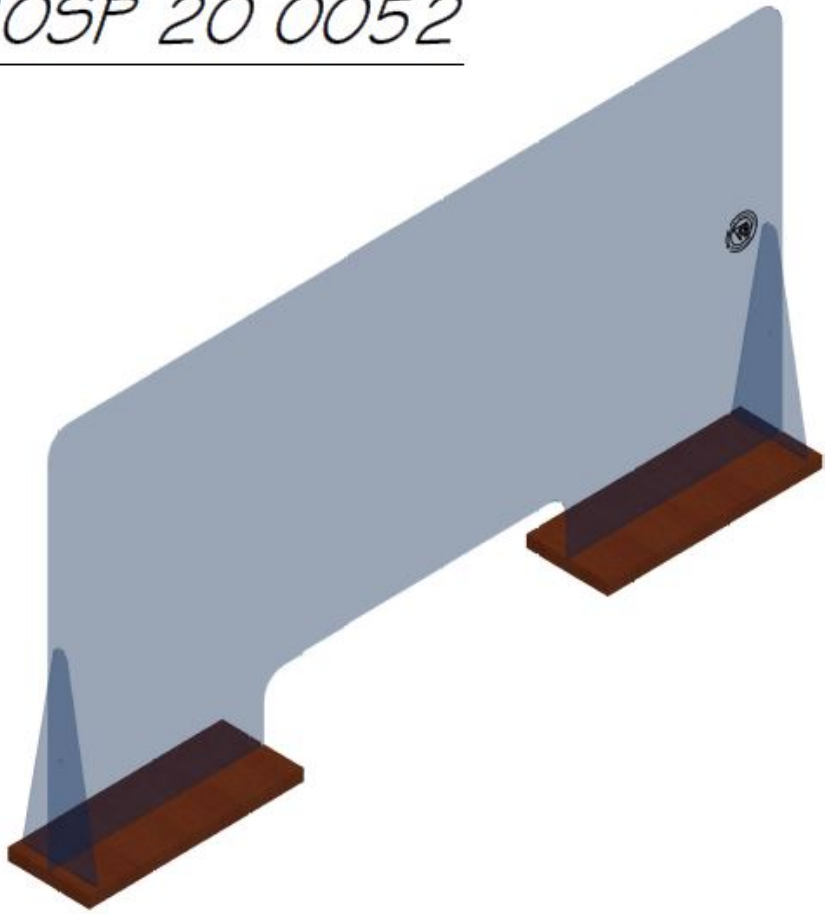


72X24 TFL Base Safety Barrier w/ Pass Thru

30SP 20 0052 72 x 36 Natural Oak Laminate Base Safety Barrier w/ Pass Thru



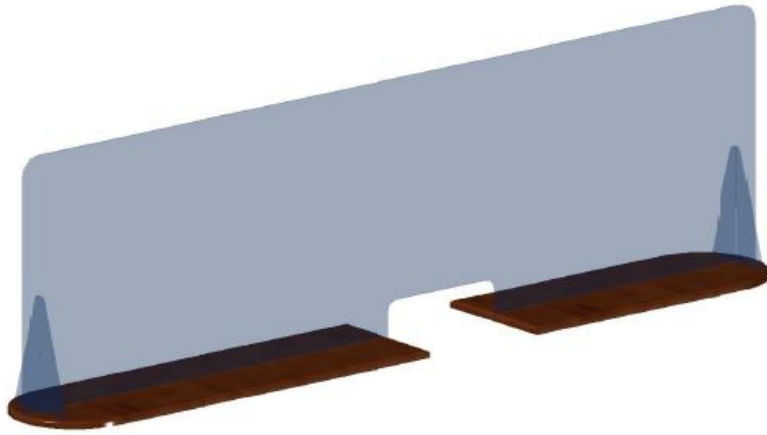
30SP 20 0052



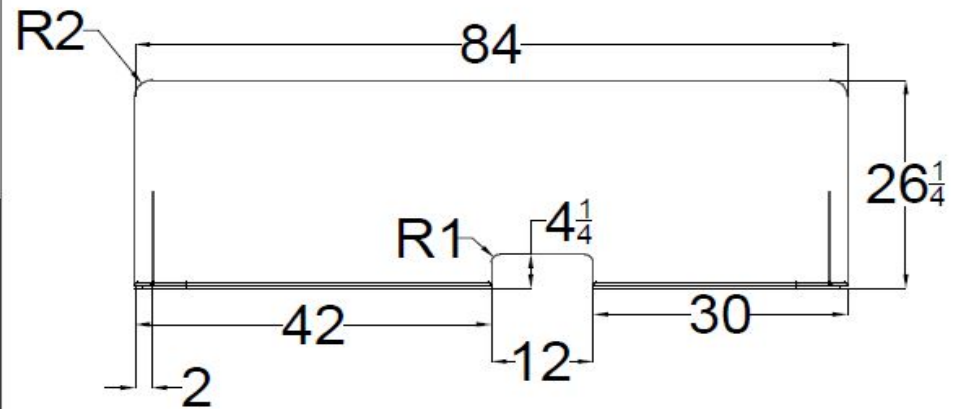
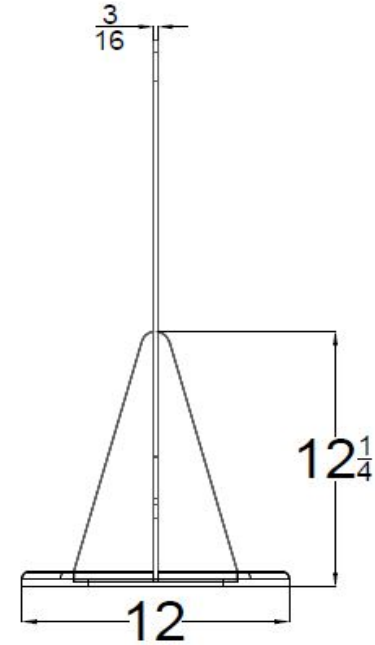
72x36 LAM Base Safety Barrier w/ Pass Thru

30SP 20 0073 84 x 26 Maple Base Safety Barrier w/ Pass Thru

30SP 20 0073



84x26 Maple Base Safety Barrier w/ Pass Thru



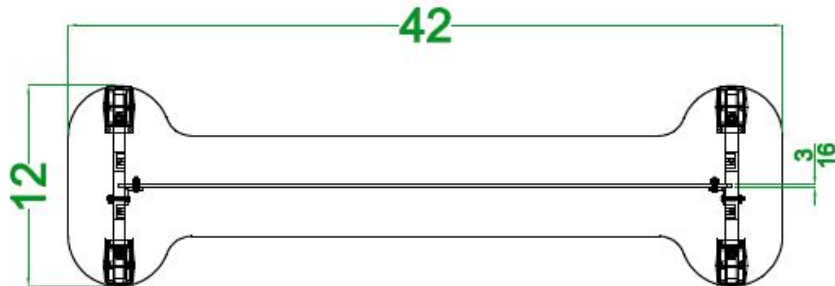
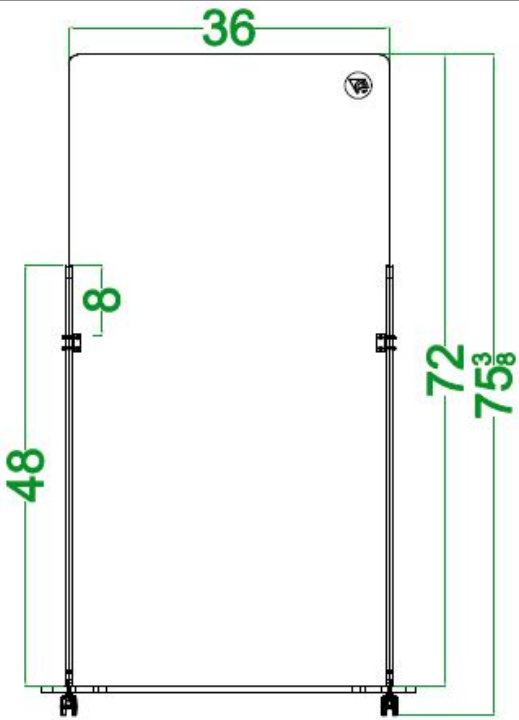
36 x 72 Wheel Base Safety Barrier



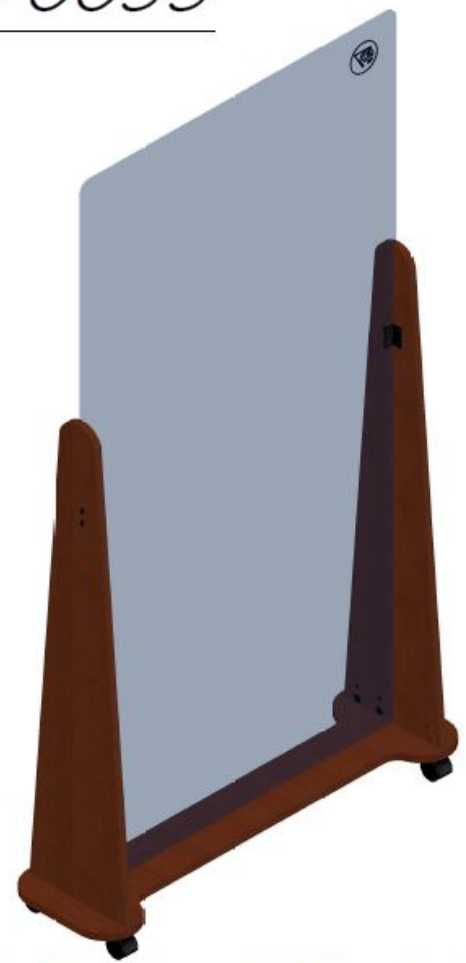
This vertical barrier with wheel base makes it mobile and easy to move. Two of the twin 50mm casters have locking brakes that can be set once the barrier is in its designated location.

The barrier can be purchased with three temperature check holes in various heights.

30SP 20 0055 36 x 72 MCP Base Safety Barrier w/ Twin 50mm Wheels



30SP 20 0055



36x72 Safety Barrier w/ Wheel Base

Clamp Style Barriers

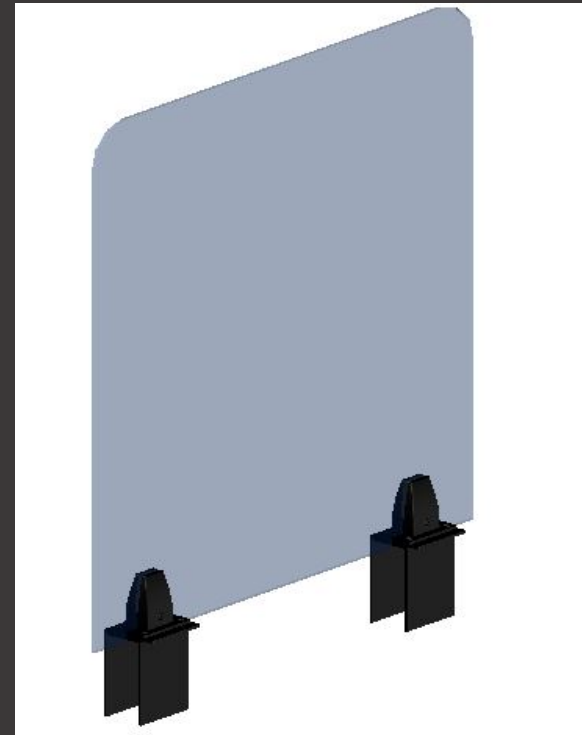
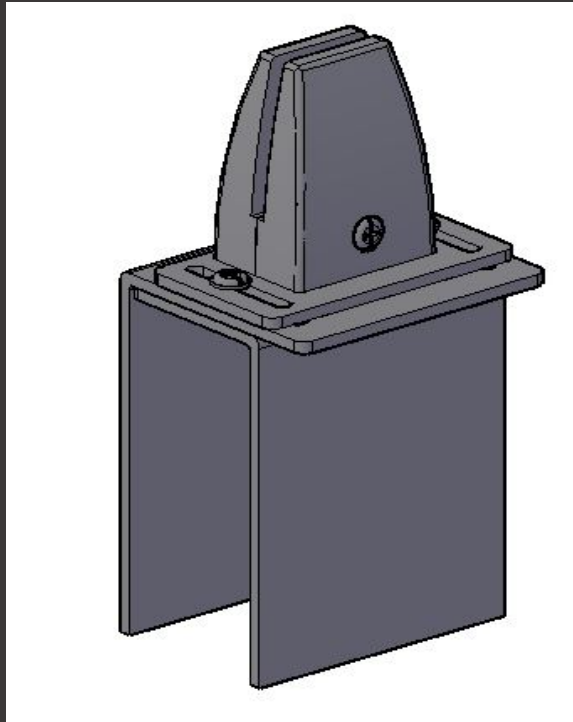


VCE has 4 styles of metal clamp mounts available to choose from.

Barriers available with these mounts come in six-inch increments

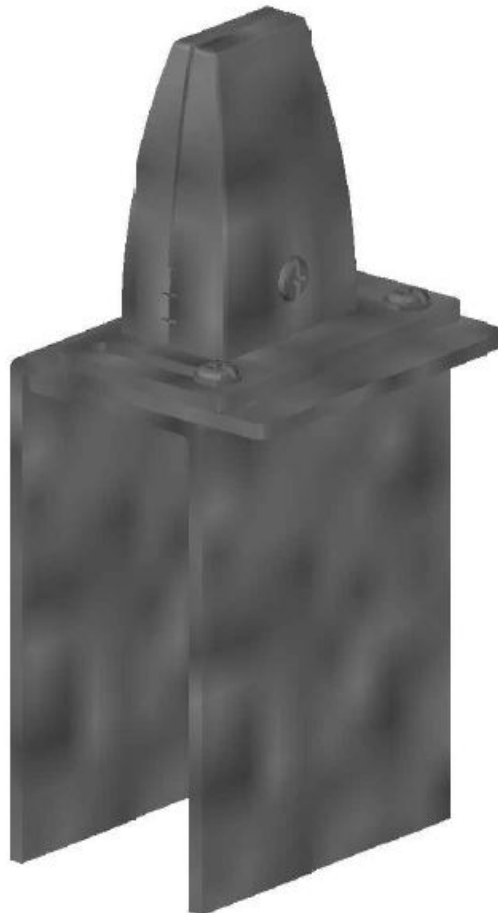
24" W x 24" H up to 24" W x 48" H
i.e. 24Wx24H, 30Wx24H, 36Wx24H,
42Wx24H, 48Wx24H

Cubicle Panel Mounted Clamp



30SP 20 0108 24x24 w/o Pass Thru
30SP 20 0140 30x24 w/o Pass Thru
30SP 20 0141 36x24 w/o Pass Thru
30SP 20 0142 42x24 w/o Pass Thru
30SP 20 0143 48x24 w/o Pass Thru

PGXPSCPKS



3D VIEW

Materials: METAL

Construction: BAY PRODUCTS CUBICLE PANEL MOUNT BRACKET

Item: PGXPSCPKS
CUBICLE PANEL MOUNT
BRACKET

Virginia
Connections
Enterprises

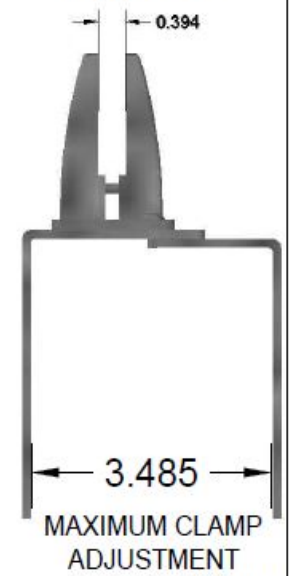
Date: 3-10-21 Drawn By: VJ



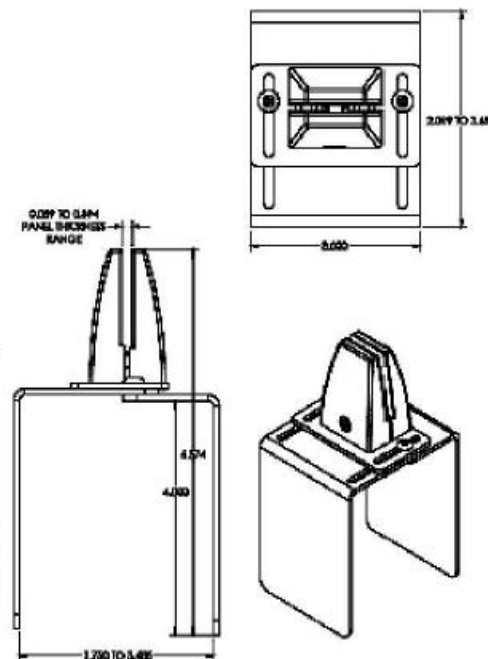
MINIMUM PANEL
THICKNESS



MAXIMUM PANEL
THICKNESS

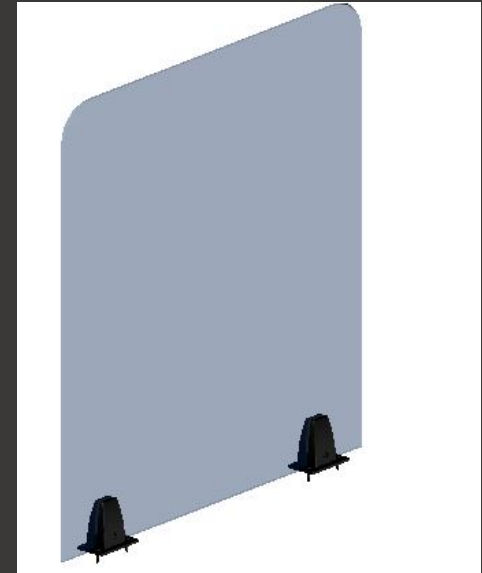
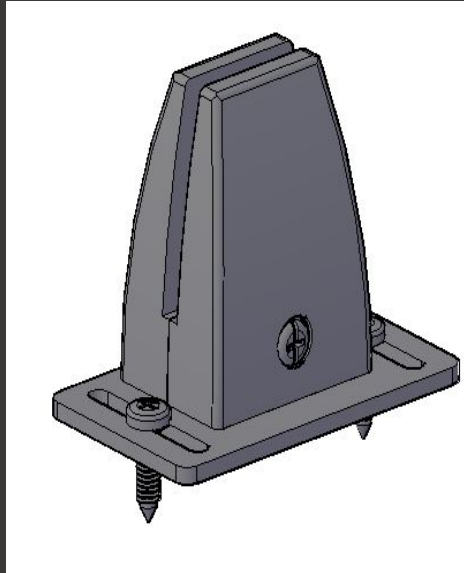
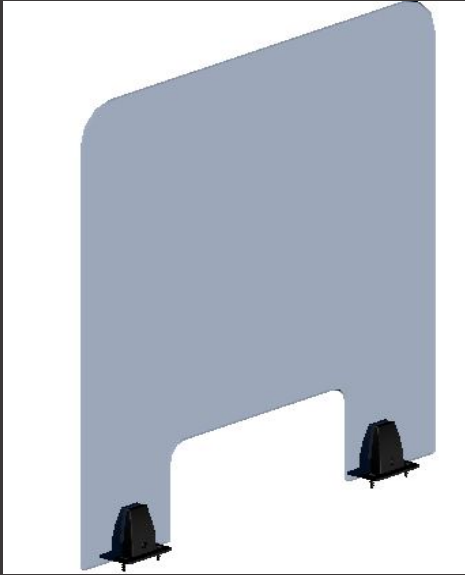


SIDE VIEW



PART WITH ALL
MEASUREMENTS

Surface Mounted Clamp



30SP 20 0139 24x24 w/ Pass Thru
30SP 20 0137 30x24 w/ Pass Thru
30SP 20 0135 36x24 w/ Pass Thru
30SP 20 0133 42x24 w/ Pass Thru
30SP 20 0131 48x24 w/ Pass Thru
30SP 20 0138 24x24 w/o Pass Thru
30SP 20 0136 30x24 w/o Pass Thru
30SP 20 0134 36x24 w/o Pass Thru
30SP 20 0132 42x24 w/o Pass Thru
30SP 20 0130 48x24 w/o Pass Thru

PGXPSSMKS



3D VIEW

Materials: METAL

Construction: BAY PRODUCTS SURFACE MOUNTING BRACKET

Item: PGXPSCMKS
SURFACE
MOUNTING BRACKET

Date: 3-10-21

Virginia
Correctional
Enterprises

Drawn By: VJ



MINIMUM PANEL
THICKNESS

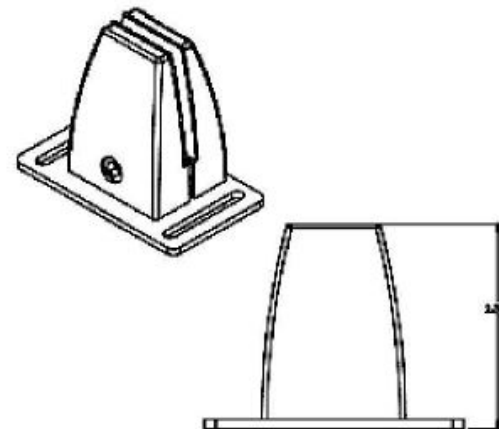


MAXIMUM PANEL
THICKNESS

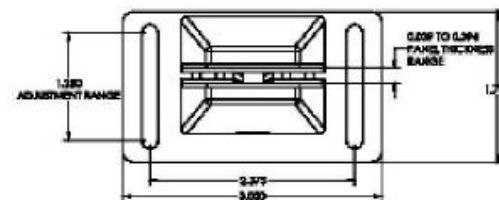


SURFACE
MOUNT

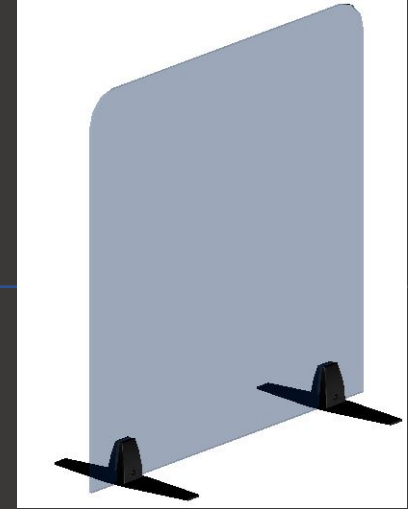
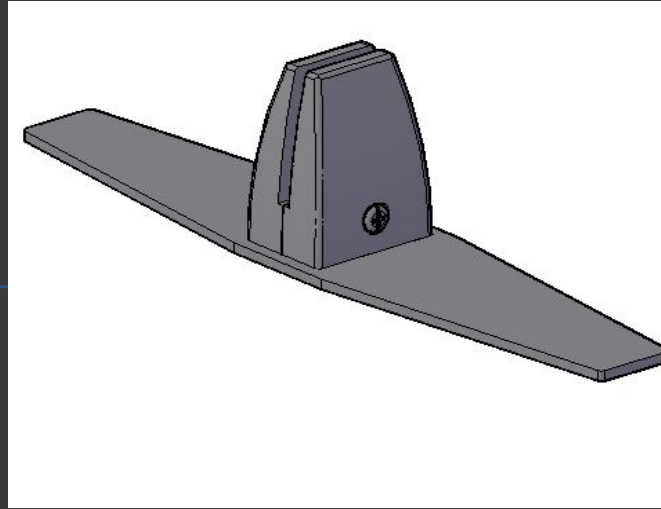
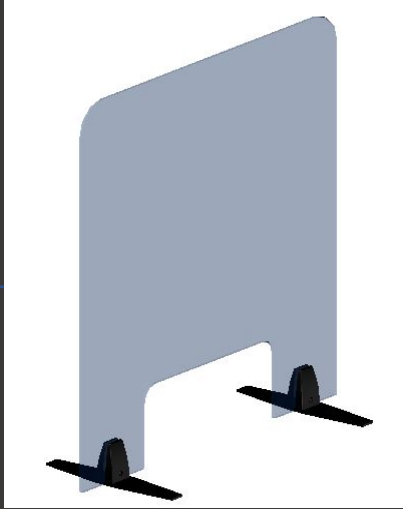
SIDE VIEW



PART WITH ALL
MEASUREMENTS



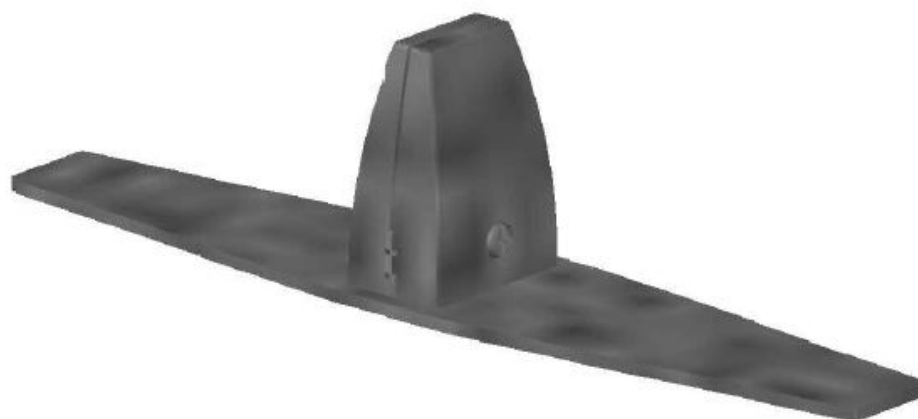
Free Standing Mounted Bracket



30SP 20 0129 24x24 w/ Pass Thru
30SP 20 0127 30x24 w/ Pass Thru
30SP 20 0125 36x24 w/ Pass Thru
30SP 20 0123 42x24 w/ Pass Thru
30SP 20 0121 48x24 w/ Pass Thru
30SP 20 0128 24x24 w/o Pass Thru
30SP 20 0126 30x24 w/o Pass Thru
30SP 20 0124 36x24 w/o Pass Thru

30SP 20 0122 42x24 w/o Pass Thru
30SP 20 0120 48x24 w/o Pass Thru

PGXPSFSKS



3D VIEW

Materials: METAL

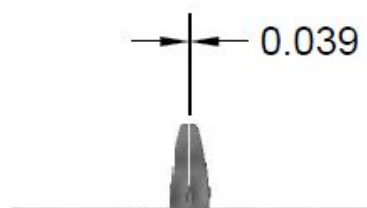
Construction: BAY PRODUCTS FREE STANDING MOUNTING BRACKET

Item: PGXPSFSKS
FREE STANDING
MOUNTING BRACKET

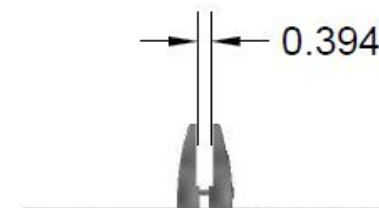
Virginia
Connections
Enterprises
Date: 3-10-21
Drawn By: VJ



MINIMUM PANEL
THICKNESS

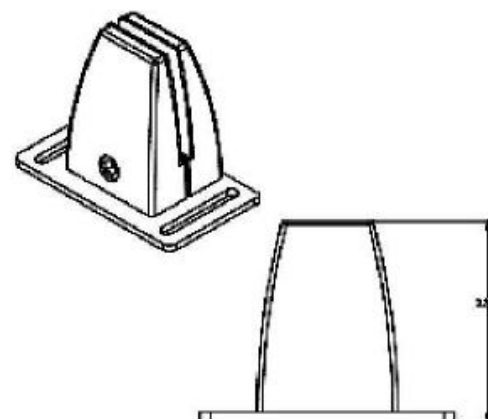


MAXIMUM PANEL
THICKNESS

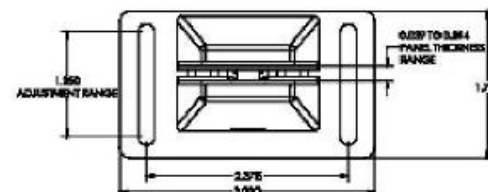


FREE STANDING
MOUNTING BRACKET

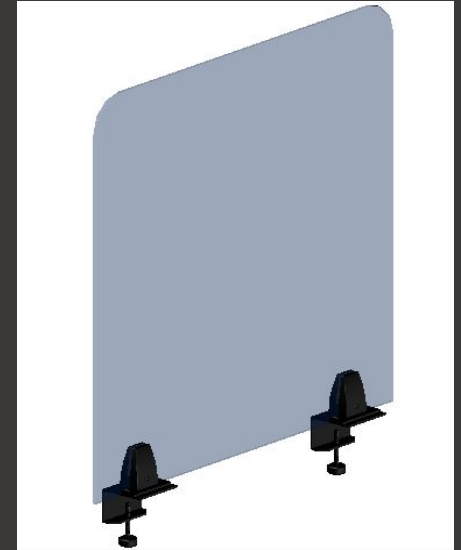
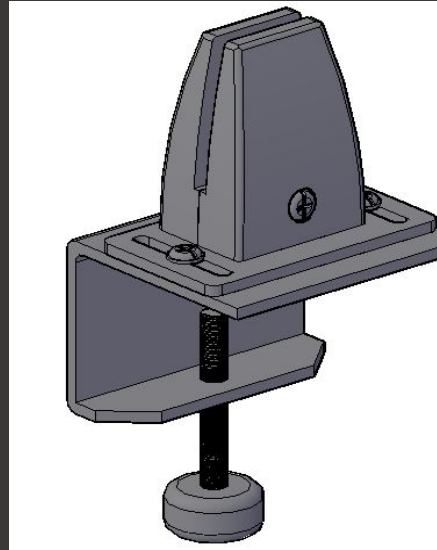
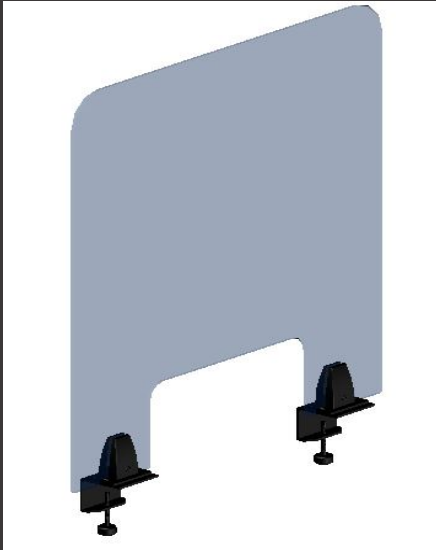
SIDE VIEW



PART WITH ALL
MEASUREMENTS



Adjustable Clamp Mounting Bracket



30SP 20 0119 24x24 w/ Pass Thru
30SP 20 0117 30x24 w/ Pass Thru
30SP 20 0115 36x24 w/ Pass Thru
30SP 20 0113 42x24 w/ Pass Thru
30SP 20 0111 48x24 w/ Pass Thru
30SP 20 0118 24x24 w/o Pass Thru
30SP 20 0116 30x24 w/o Pass Thru
30SP 20 0114 36x24 w/o Pass Thru
30SP 20 0112 42x24 w/o Pass Thru
30SP 20 0110 48x24 w/o Pass Thru

PGXPSCMKS



3D VIEW

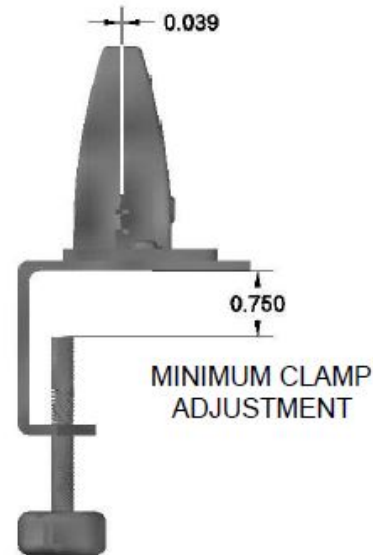
Materials: METAL

Construction: BAY PRODUCTS ADJUSTABLE CLAMP MOUNTING BRACKET

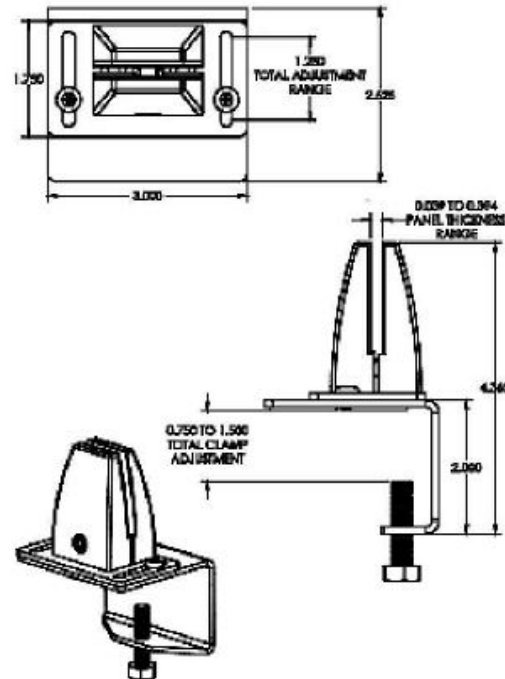
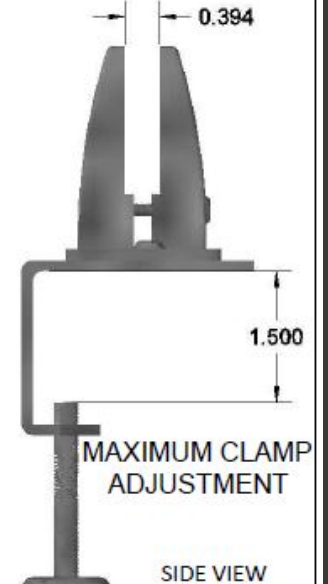
Item: PGXPSCMKS
ADJUSTABLE CLAMP
MOUNTING BRACKET

	Virginia Connections Enterprises	
Date: 3-10-21	Drawn By: VJ	

MINIMUM PANEL THICKNESS



MAXIMUM PANEL THICKNESS



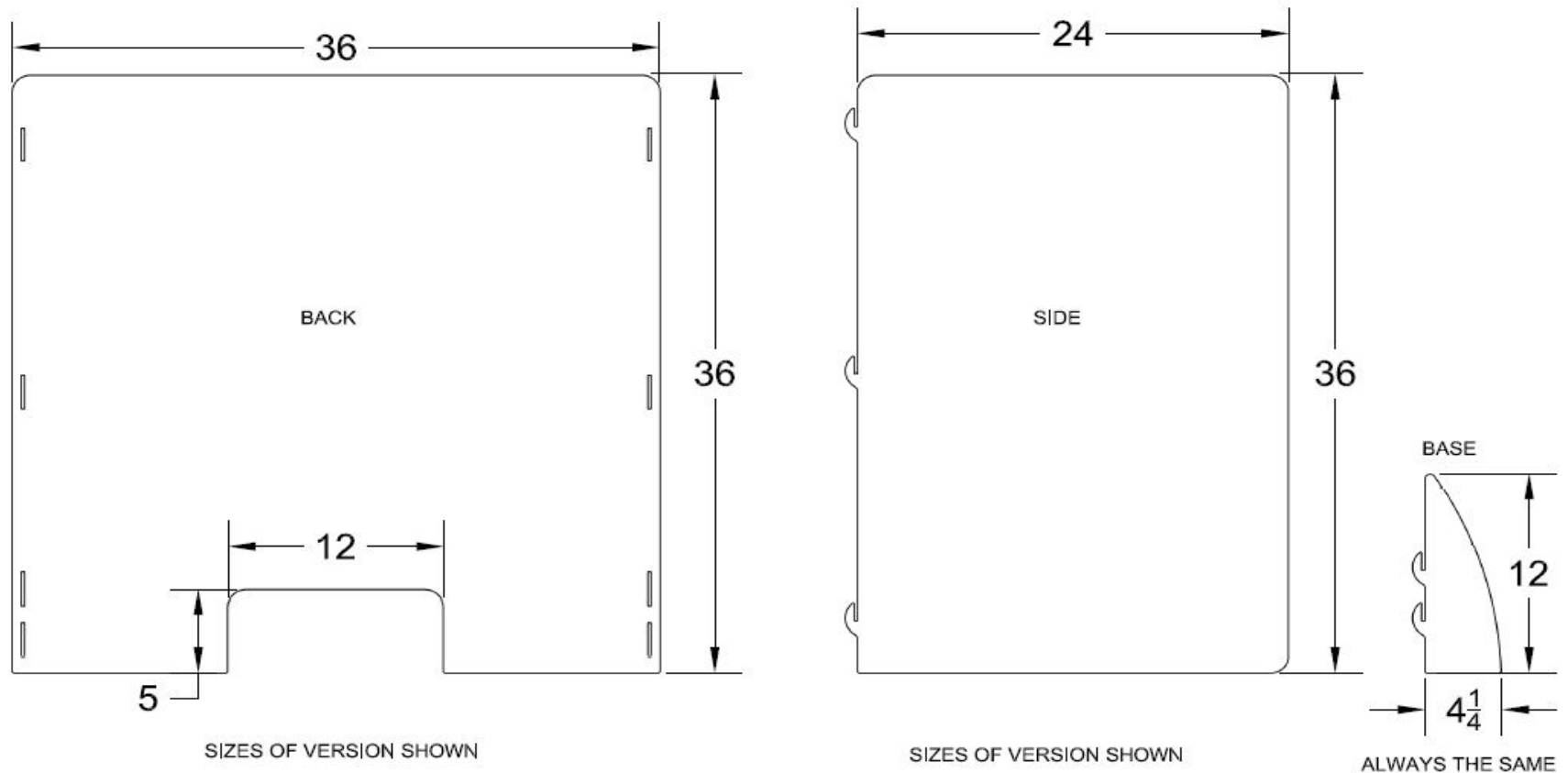
PART WITH ALL
MEASUREMENTS

Custom Safety Barriers



VCE's custom barriers can be tailored to fit your particular needs and applications.

30SP 20 KIT5 36X36

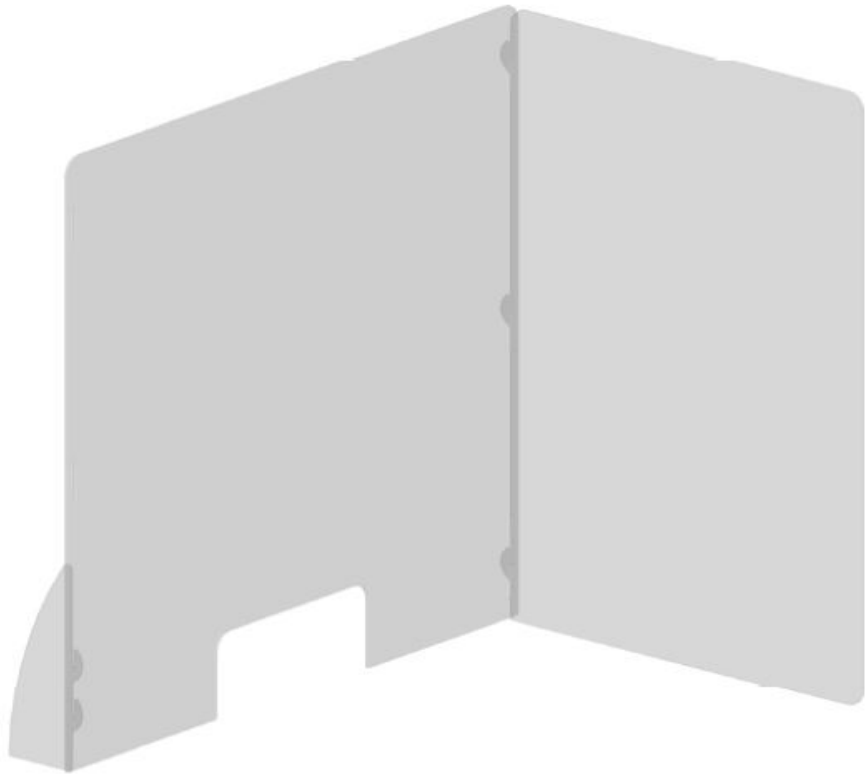


30SP 20 KIT5

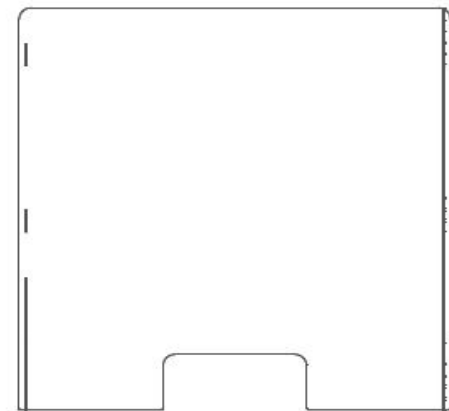
This (5) piece kit can be purchased to fit various configurations for safety barriers needed. kit contains (1) back (2) sides and (2) bases. These parts can be custom ordered into the size barrier needed to fit individual needs. Can be changed into different configurations by customer as needed.

- 1) barrier no sides
- 2) barrier one side
- 3) barrier 2 sides

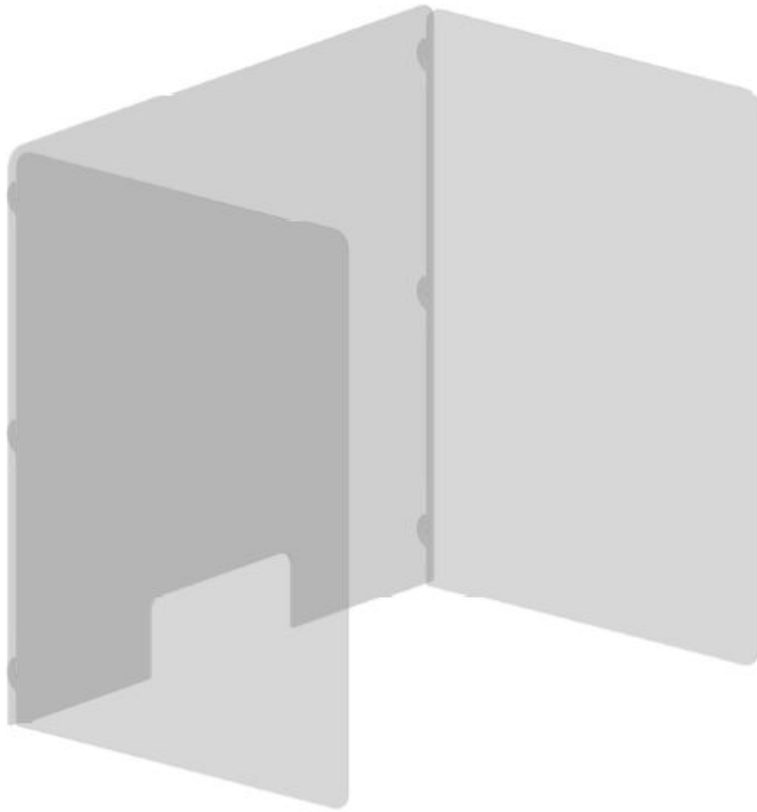
30SP 20 KIT5a



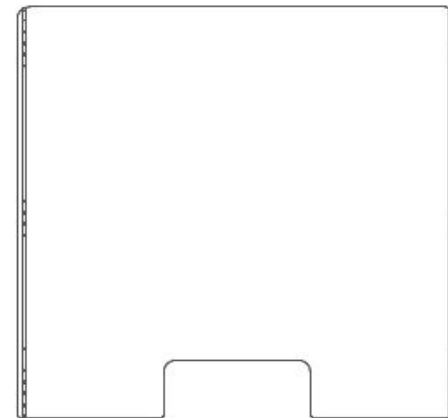
3D VIEW



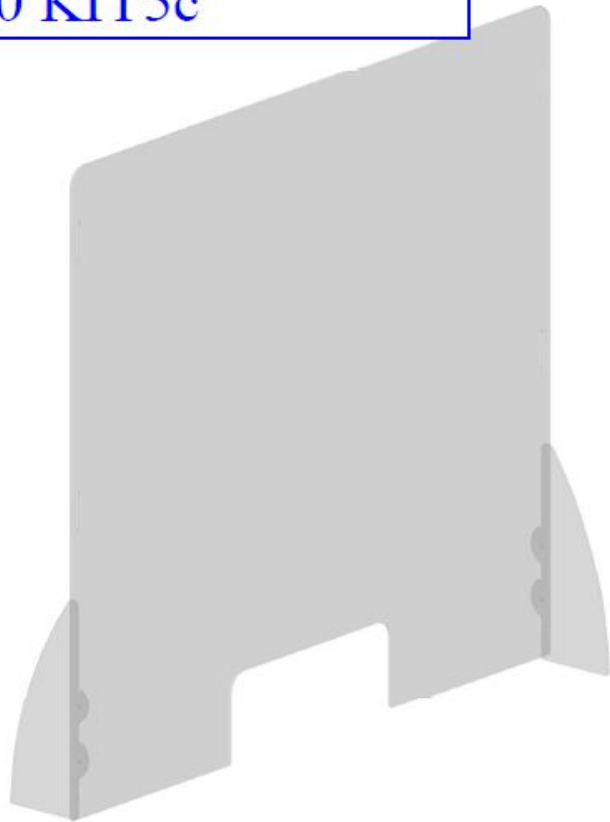
30SP 20 KIT5b



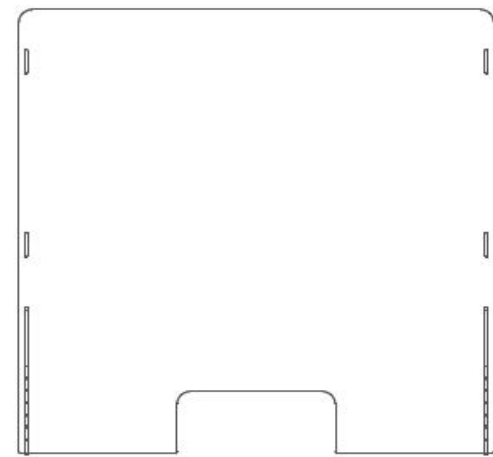
3D VIEW



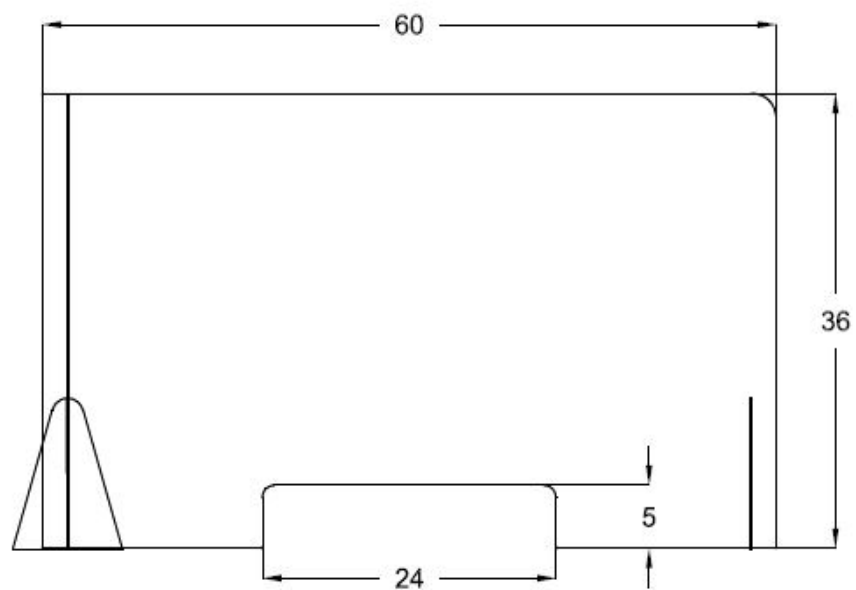
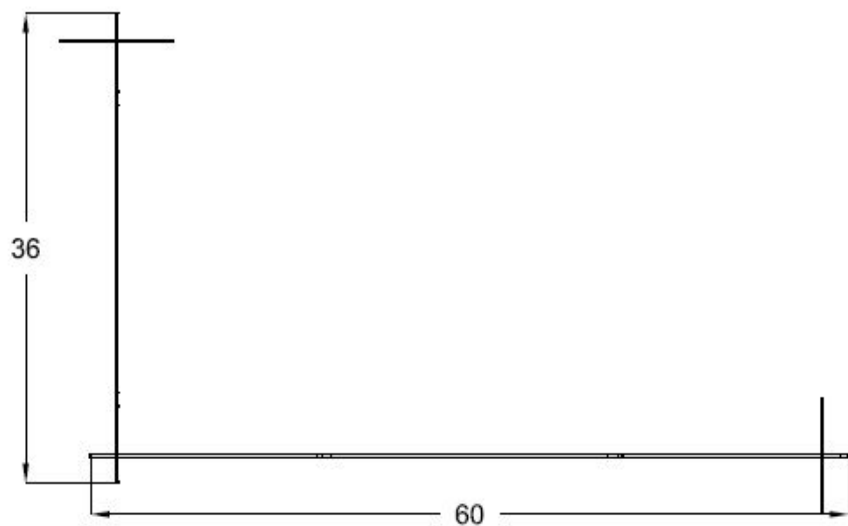
30SP 20 KIT5c



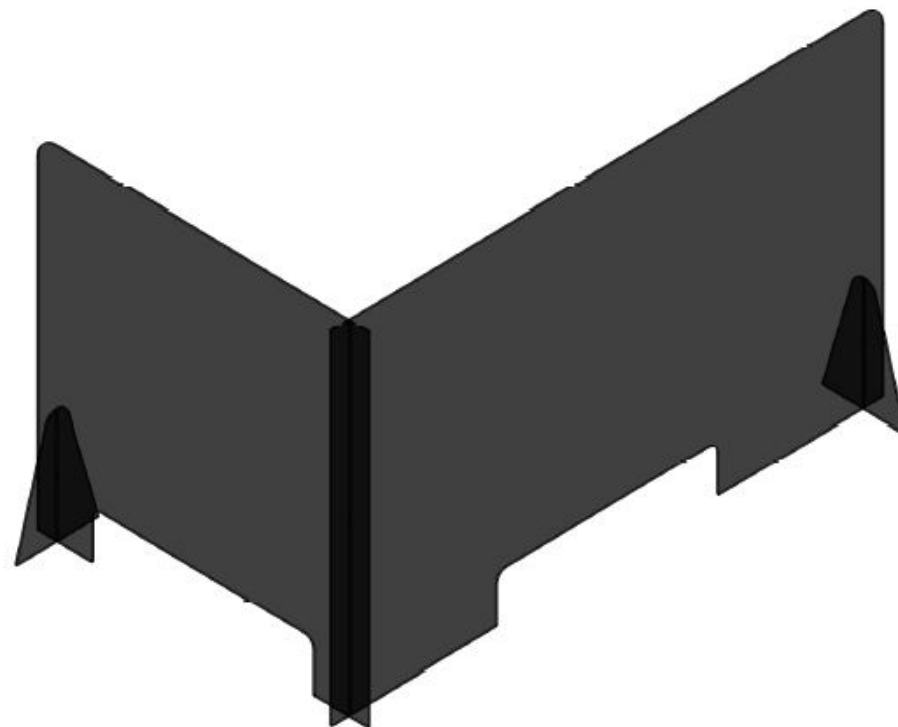
3D VIEW



30SP 20 xxx1 60x36/36x36

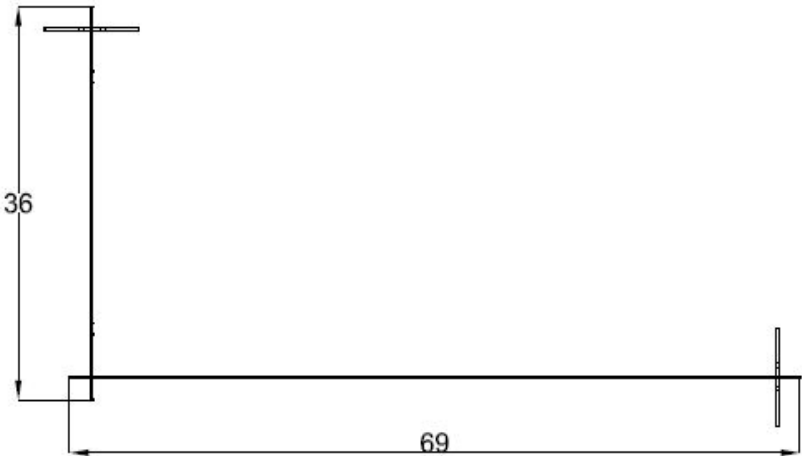


30SP 20 xxx1
60Wx36H/36Wx36H

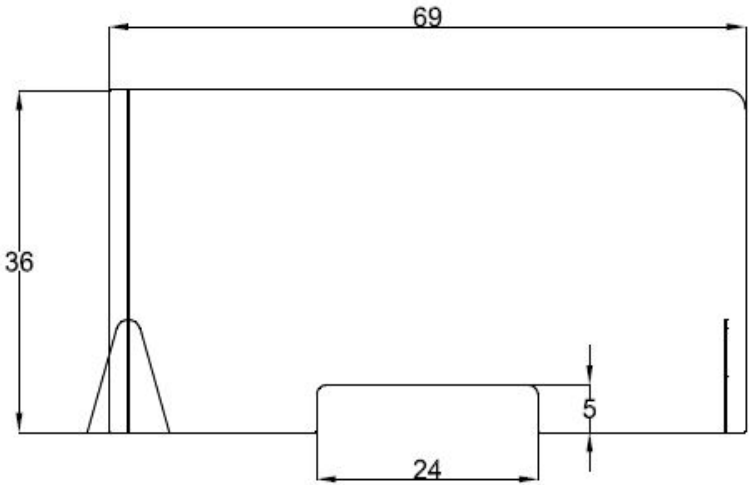


30SP 20 xxx2 69x36/36x36

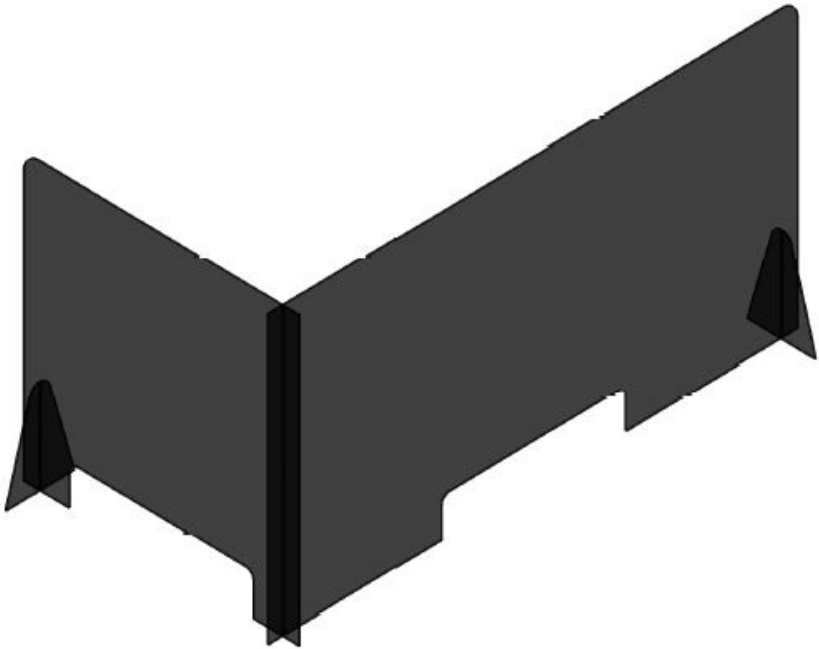
TOP VIEW



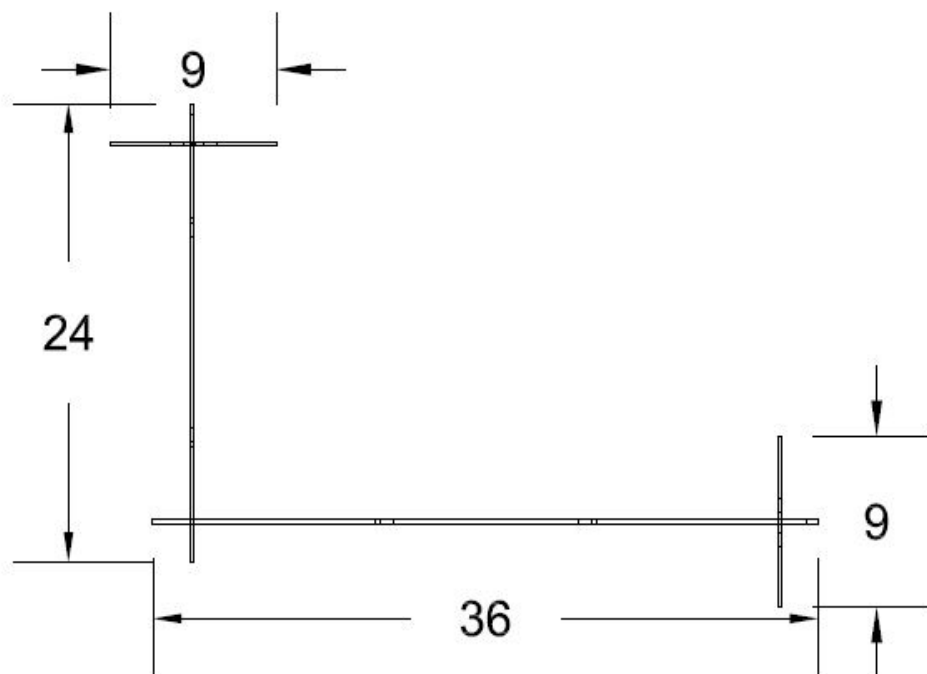
FRONT VIEW



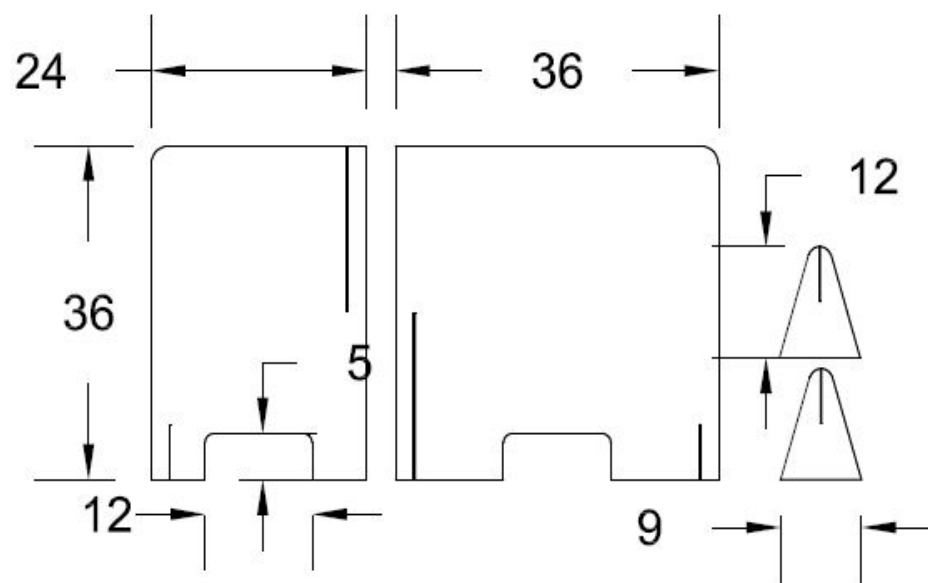
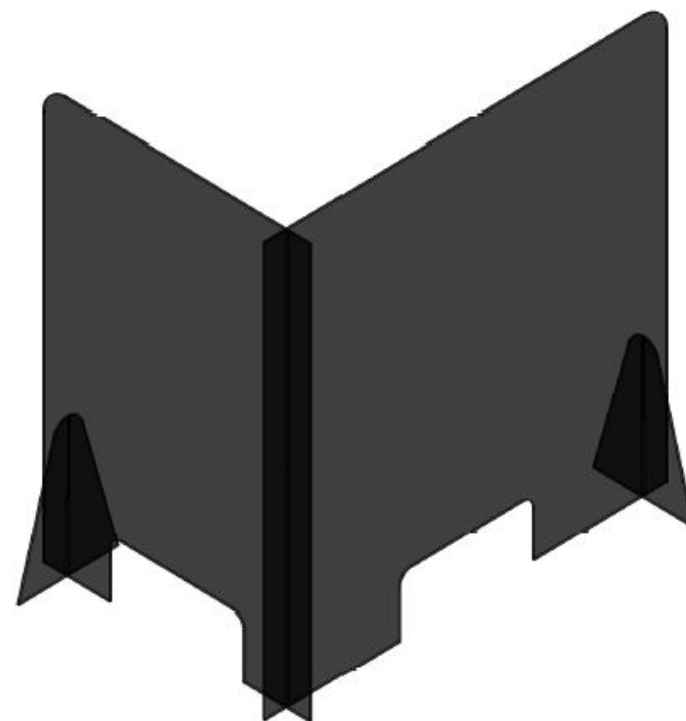
30SP 20 xxx2
69Wx36H/36Wx36H



30SP 20 xxx3 36x36/24x36

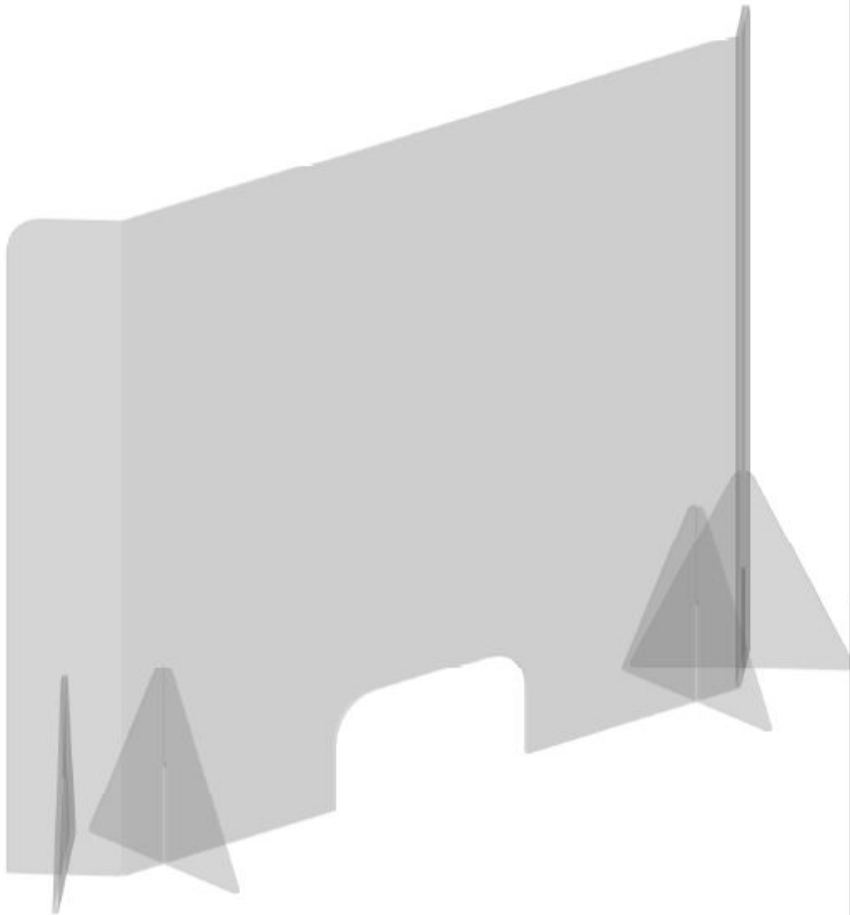


30SP 20 xxx3
36Wx36H/24Wx36H

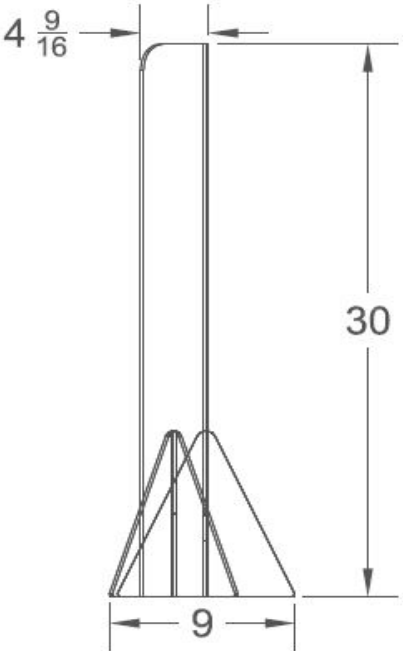


30SP 20 xxx4 32x30/4x30/4x30

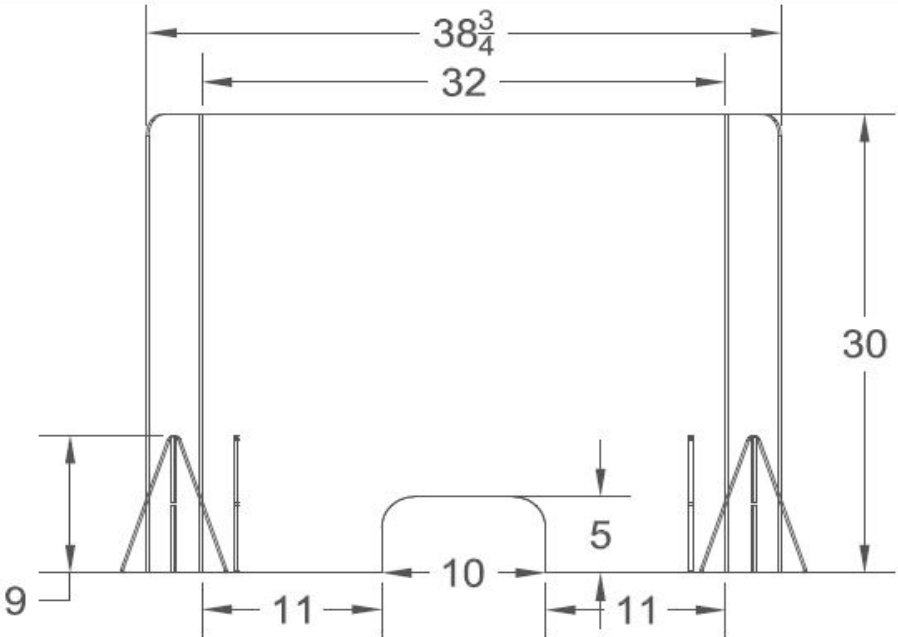
30SP 20 xxx4 32-38Wx30H



3D VIEW

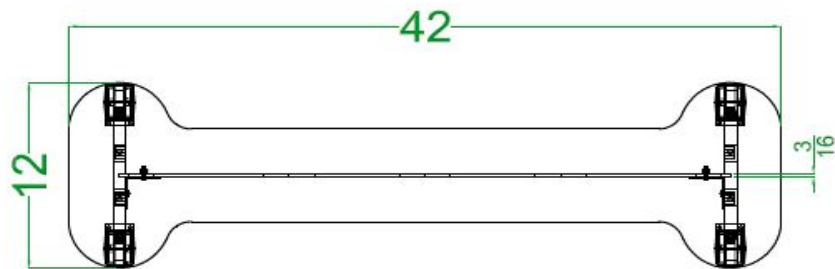
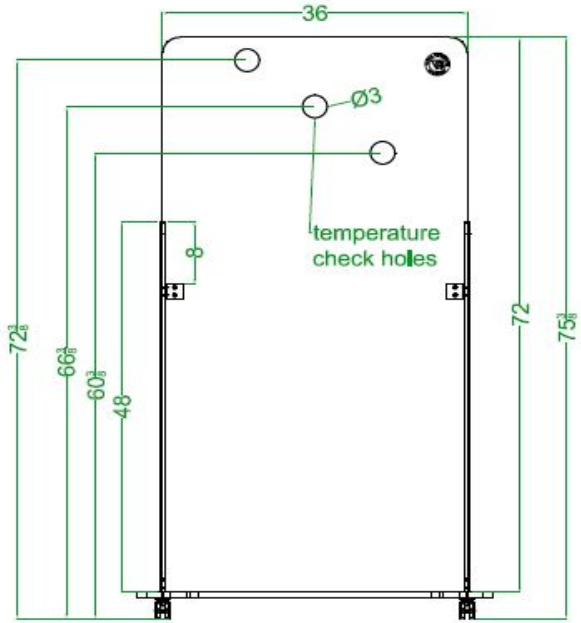


SIDE VIEW

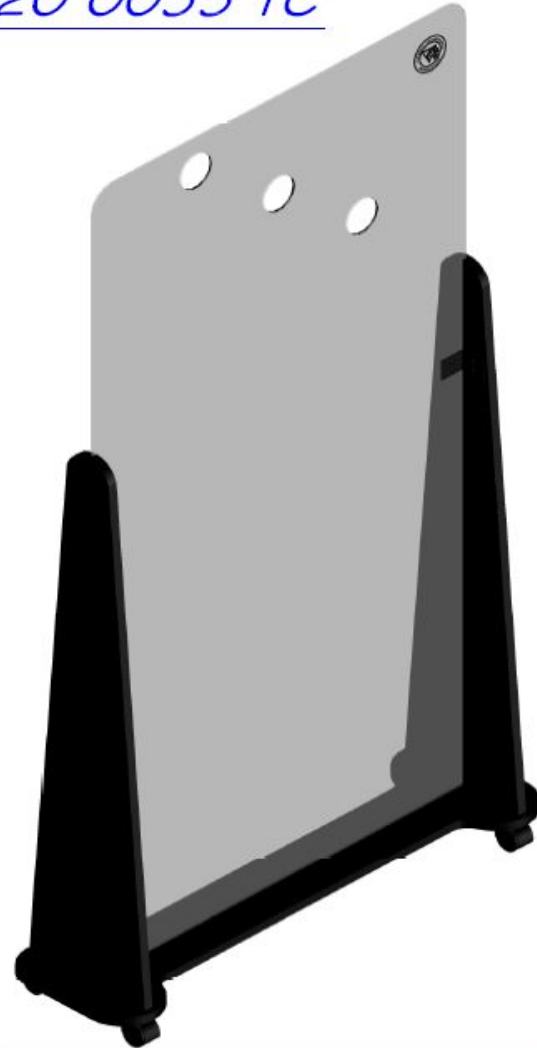


FRONT VIEW

30SP 20 0055 TC 36x72 w/ Temperature Check holes



30SP 20 0055 TC



Conference Table Barriers

Feature interlocking safety barriers that allow multiple people to be protected simultaneously.

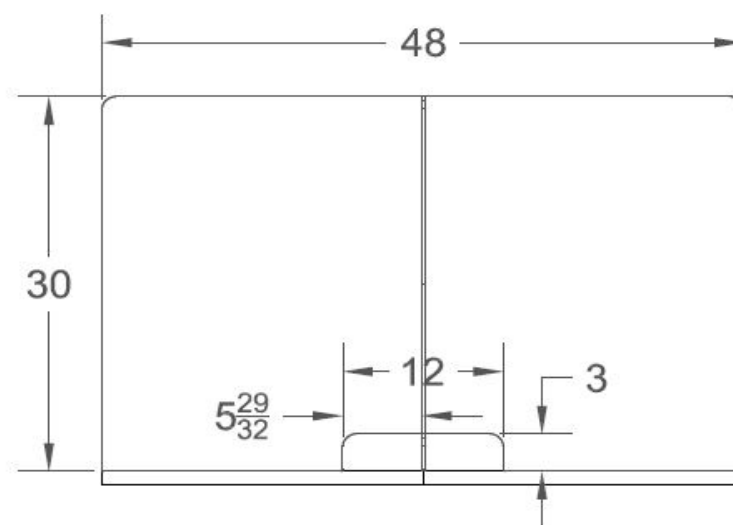
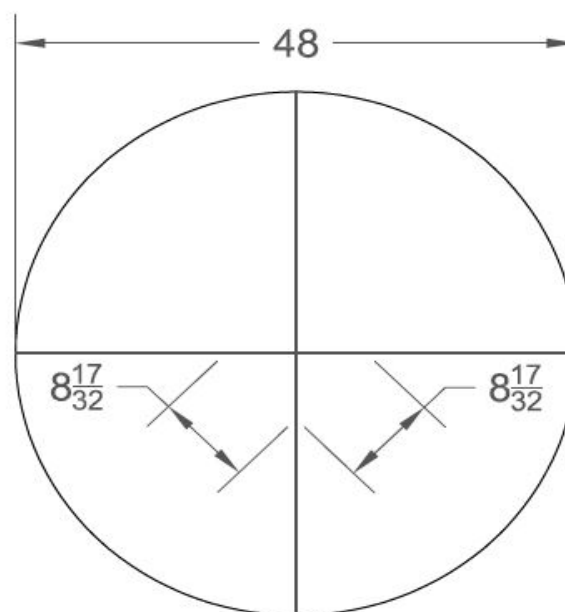


30SP 20 XSL1

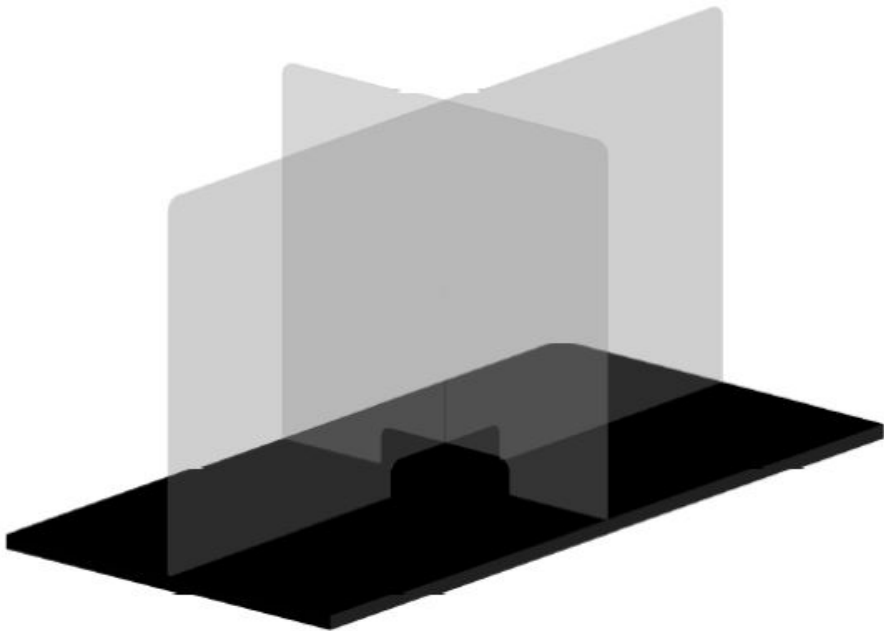


30SP 20 XSL1

3D VIEW

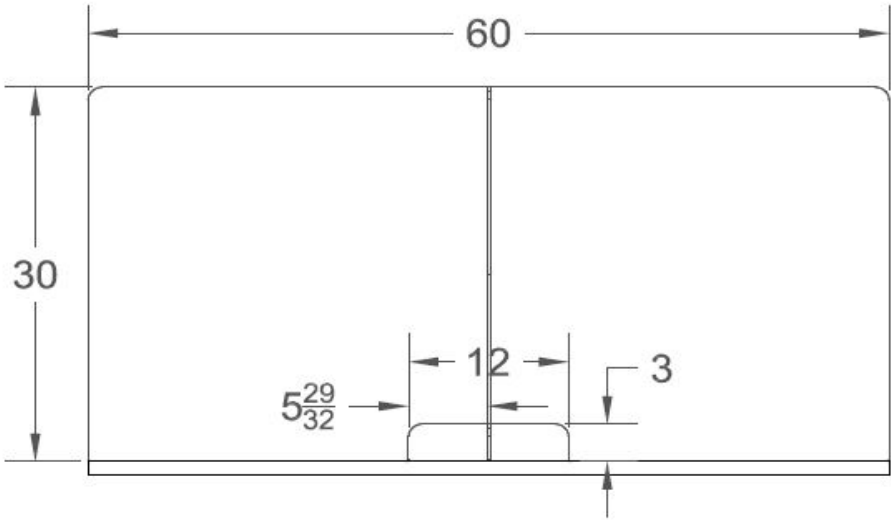
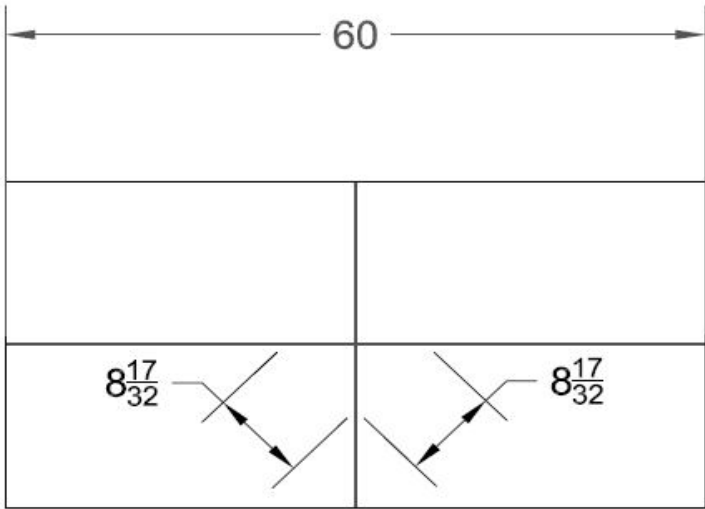


30SP 20 XSL2

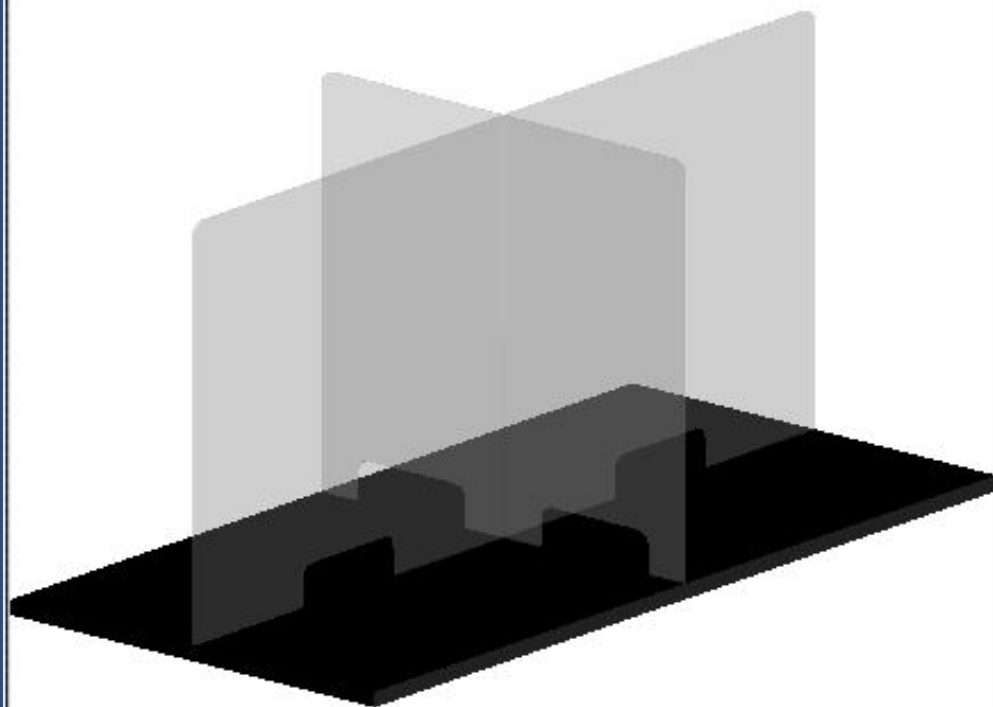


30SP 20 XSL2

3D VIEW

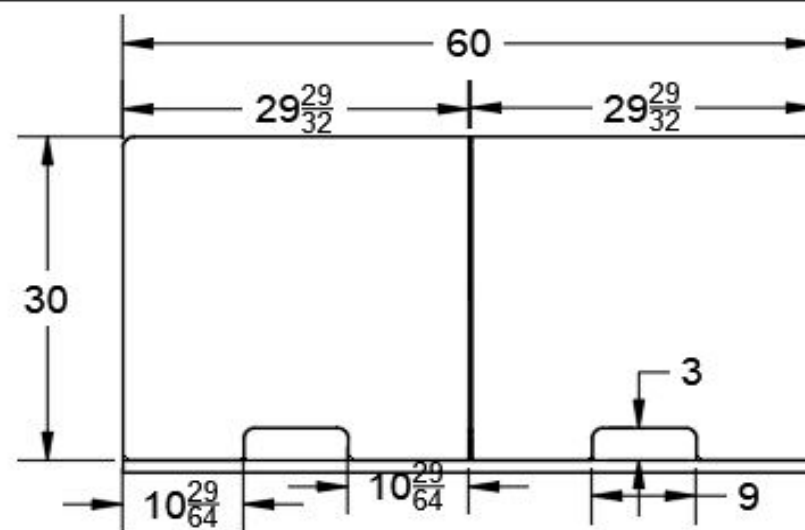
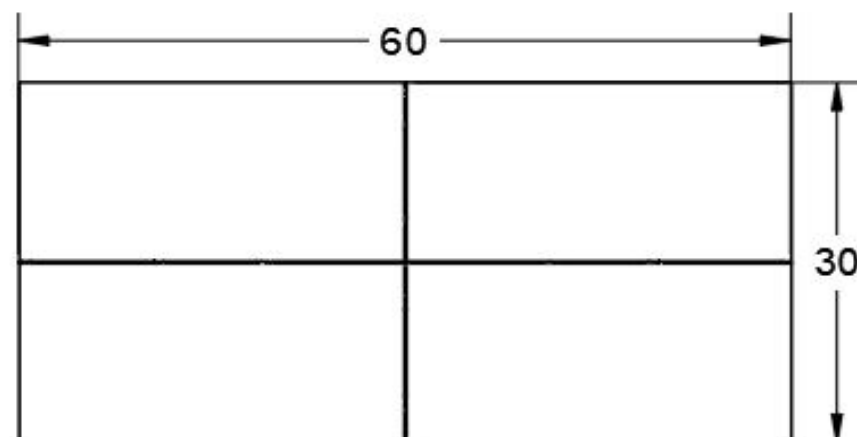


30SP 20 XSL3

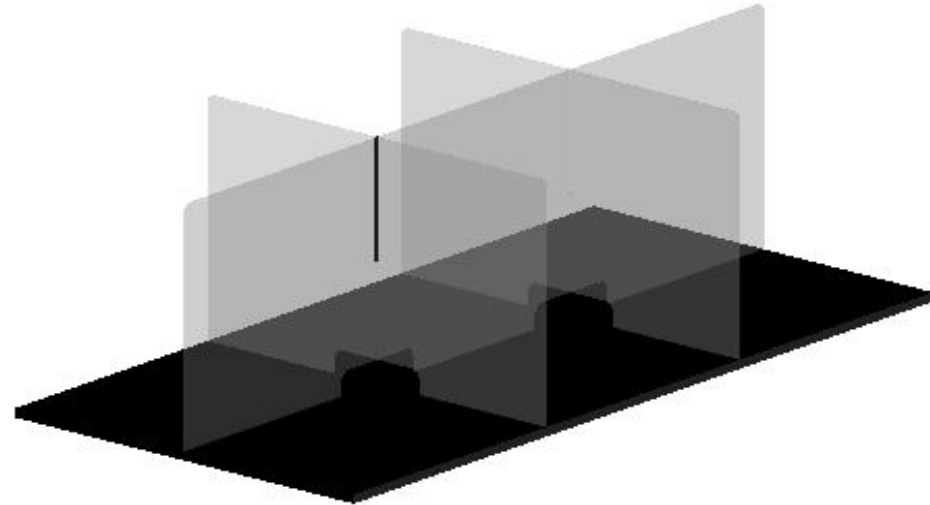


30SP 20 XSL3

3D VIEW

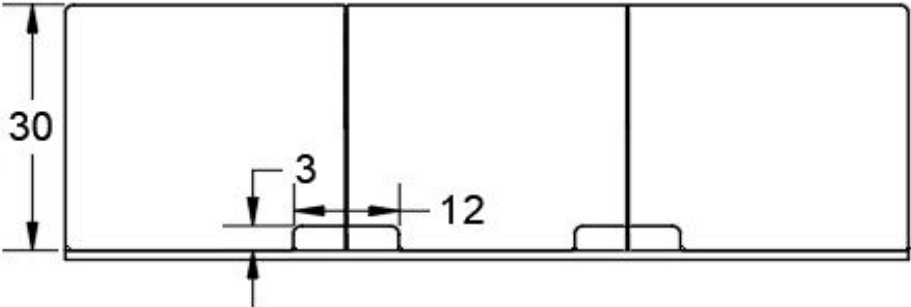
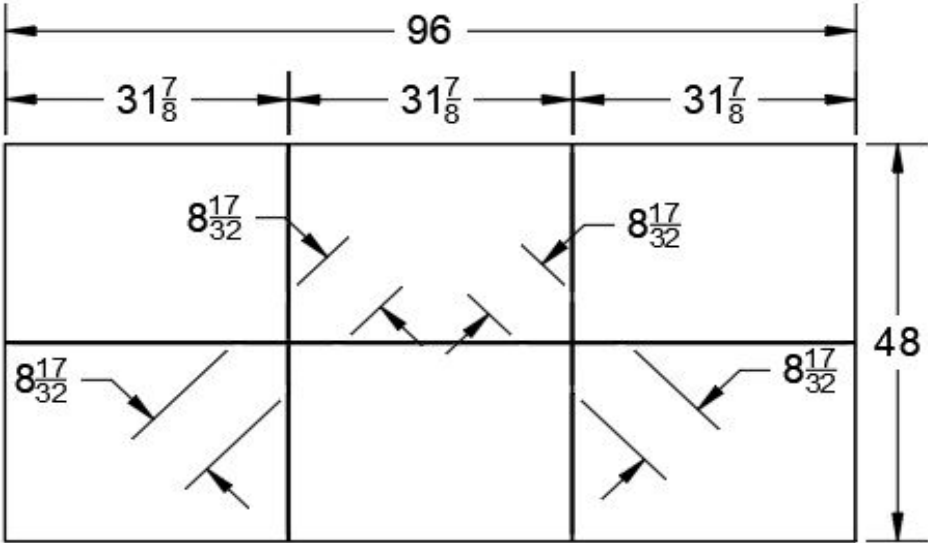


30SP 20 XSL4

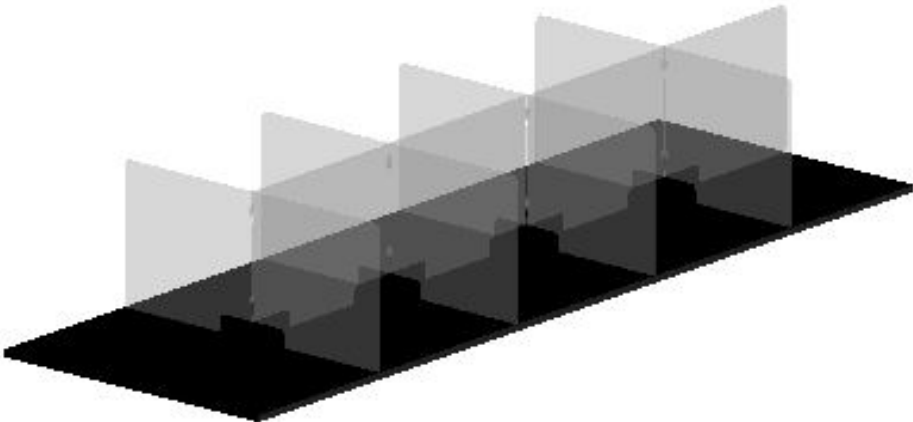


30SP 20 XSL4

3D VIEW

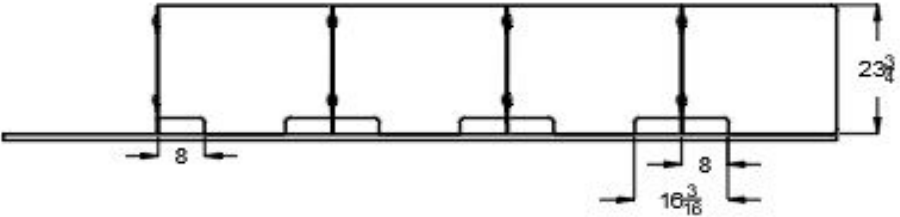
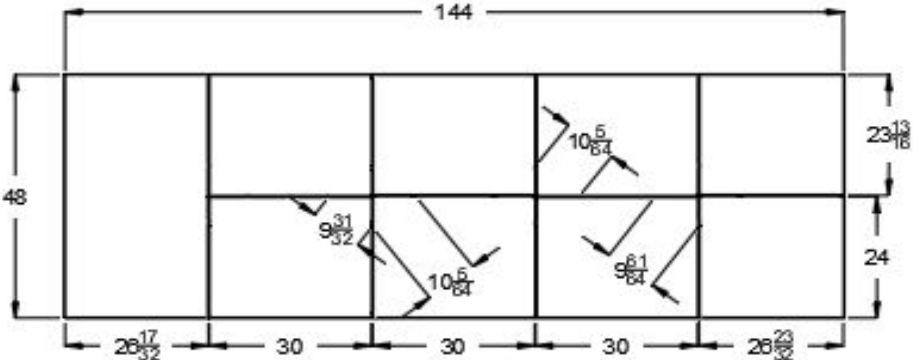


30SP 20 XSL5



30SP 20 XSL5

3D VIEW



PRICING

Hanging Barriers:

<u>30SP 20 0051 24x24</u>	\$109.95
<u>30SP 20 0049 48 x 24</u>	\$109.95
<u>30SP 20 0053 72 x 24</u>	\$315.95
<u>30SP 20 0050 96 x 24</u>	\$315.95

Free Standing w/ Pass Thru:

<u>30SP 20 0068 24 x 30</u>	\$98.49
<u>30SP 20 0067 24 x 40</u>	\$98.49
<u>30SP 20 0057 30 x 36</u>	\$129.45
<u>30SP 20 0066 32 x 30</u>	\$98.49
<u>30SP 20 0048 32 x 32</u>	\$109.95
<u>30SP 20 0065 40 x 32</u>	\$129.49
<u>30SP 20 0058 36 x 30</u>	\$129.45
<u>30SP 20 0062 36 x 36</u>	\$190.49

Free Standing w/o Pass Thru:

<u>30SP 20 0047 30 x 36</u>	\$109.95
<u>30SP 20 0056 32 x 32</u>	\$129.45
<u>30SP 20 0059 36 x 30</u>	\$129.45
<u>30SP 20 0083 60 x 30</u>	\$236.49
<u>30SP 20 0090 60 x 36</u>	\$236.49

Safety Barriers w/ TFL, Laminate, or Hardwood Base:

<u>30SP 20 0071 36 x 24</u>	\$140.49
<u>30SP 20 0063 46 x 24</u>	\$232.95
<u>30SP 20 0104 84 x 26</u>	\$132.95
<u>30SP 20 0072 60 x 30</u>	\$541.95
<u>30SP 20 0105 72 x 24</u>	\$227.95
<u>30SP 20 0052 72 x 36</u>	\$360.95
<u>30SP 20 0073 84 x 26</u>	\$550.95

Wheel Base Safety Barrier:

<u>30SP 20 0055 36 x 72</u>	\$352.95
-----------------------------	----------

Cubicle Panel Clamp Mounted Barriers:

<u>30SP 20 0108 24x24</u>	\$114.49
<u>30SP 20 0140 30x24</u>	\$129.49
<u>30SP 20 0141 36x24</u>	\$159.95
<u>30SP 20 0142 42x24</u>	\$159.95
<u>30SP 20 0143 48x24</u>	\$159.95

Surface Mounted Clamp:

<u>30SP 20 0139 24x24 w/ Pass Thru</u>	\$97.95
<u>30SP 20 0137 30x24 w/ Pass Thru</u>	\$112.95
<u>30SP 20 0135 36x24 w/ Pass Thru</u>	\$143.95
<u>30SP 20 0133 42x24 w/ Pass Thru</u>	\$143.95
<u>30SP 20 0131 48x24 w/ Pass Thru</u>	\$143.95
<u>30SP 20 0138 24x24 w/o Pass Thru</u>	\$97.95
<u>30SP 20 0136 30x24 w/o Pass Thru</u>	\$112.95
<u>30SP 20 0134 36x24 w/o Pass Thru</u>	\$143.95
<u>30SP 20 0132 42x24 w/o Pass Thru</u>	\$143.95
<u>30SP 20 0130 48x24 w/o Pass Thru</u>	\$143.95

Free Standing Mounted Bracket:

<u>30SP 20 0129 24x24 w/ Pass Thru</u>	\$107.95
<u>30SP 20 0127 30x24 w/ Pass Thru</u>	\$123.49
<u>30SP 20 0125 36x24 w/ Pass Thru</u>	\$153.95
<u>30SP 20 0123 42x24 w/ Pass Thru</u>	\$153.95
<u>30SP 20 0121 48x24 w/ Pass Thru</u>	\$153.95
<u>30SP 20 0128 24x24 w/o Pass Thru</u>	\$107.95
<u>30SP 20 0126 30x24 w/o Pass Thru</u>	\$123.49
<u>30SP 20 0124 36x24 w/o Pass Thru</u>	\$153.95
<u>30SP 20 0122 42x24 w/o Pass Thru</u>	\$153.95
<u>30SP 20 0120 48x24 w/o Pass Thru</u>	\$153.95

Customized Safety Barriers Section:

<u>30SP 20 KIT5 36X36</u>	Quote available upon request
<u>30SP 20 0055 TC 36x72</u>	Quote available upon request
<u>30SP 20 xxx1 60x36/36x36</u>	Quote available upon request
<u>30SP 20 xxx2 69x36/36x36</u>	Quote available upon request
<u>30SP 20 xxx3 36x36/24x36</u>	Quote available upon request
<u>30SP 20 xxx4 32x30/4x30/4x30</u>	Quote available upon request

Adjustable Clamp Mounting Bracket:

<u>30SP 20 0119 24x24 w/ Pass Thru</u>	\$107.95
<u>30SP 20 0117 30x24 w/ Pass Thru</u>	\$123.49
<u>30SP 20 0115 36x24 w/ Pass Thru</u>	\$153.95
<u>30SP 20 0113 42x24 w/ Pass Thru</u>	\$153.95
<u>30SP 20 0111 48x24 w/ Pass Thru</u>	\$153.95
<u>30SP 20 0118 24x24 w/o Pass Thru</u>	\$107.95
<u>30SP 20 0116 30x24 w/o Pass Thru</u>	\$123.49
<u>30SP 20 0114 36x24 w/o Pass Thru</u>	\$153.95
<u>30SP 20 0112 42x24 w/o Pass Thru</u>	\$153.95
<u>30SP 20 0110 48x24 w/o Pass Thru</u>	\$153.95

Conference Table Barriers:

<u>30SP 20 XSL1</u>	Quote available upon request
<u>30SP 20 XSL2</u>	Quote available upon request
<u>30SP 20 XSL3</u>	Quote available upon request
<u>30SP 20 XSL4</u>	Quote available upon request
<u>30SP 20 XSL5</u>	Quote available upon request